

Muses
CABINETS

Coast to Coast
California/Georgia



SPECBOOK

Phone: 800-806-0708 · FAX: 909-927-8333

Email: info@musescabinets.com

Website: www.musescabinets.com

TABLE OF CONTENTS

Section 1: Policies & Information

About Us	2
Ordering Information	3
Terms & Conditions	5
Frequently Asked Questions	9
Warranty	12

Section 2: Styles & Specifications

Thielsen	13
Helena	17
Modoc	19
Material & Construction Specifications	20

Section 3: SKUs & Specifications

Base Cabinets	23
Wall Cabinets	32
Oven & Pantry Cabinets	50
Bathroom Vanities	54
Trim & Details	59
Accessories	66

ABOUT US



Welcome to Muses Cabinets, your premier source for high-quality kitchen and bath cabinets. At Muses Cabinets, we specialize in providing top-notch cabinets for both residential and commercial properties. As a factory-direct wholesaler, we have a limited selection of products, but we maintain a great inventory to meet your needs.

Our company was founded with a mission to provide exceptional service and products to our customers. We understand that your kitchen and bath cabinets are an integral part of your home or business, and that's why we only offer the best products on the market. Our team of experts has years of experience in the industry, and we take pride in our ability to provide our customers with the best possible service.

At Muses Cabinets, we believe that every customer deserves to have access to top-quality products at an affordable price. That's why we work tirelessly to keep our prices competitive and our inventory well-stocked. Whether you're a contractor or a homeowner, we have the perfect cabinets for your needs.

We know that choosing the right cabinets for your kitchen or bath can be a daunting task, which is why our team is always on hand to offer expert advice and guidance. We will work closely with you to understand your specific needs and help you choose the perfect cabinets to meet them. With our help, you can rest assured that you will have the cabinets you need to create the perfect space.

Thank you for considering Muses Cabinets for your kitchen and bath cabinet needs. We are committed to providing you with the highest level of service and products possible, and we look forward to serving you soon.

ONLINE ORDERS



We are always looking for ways to improve our services and make ordering from us as easy and convenient as possible. With this in mind, we would like to encourage you to place your orders directly through our website.

By using our website to place your orders, you can enjoy the following benefits:

1. **24/7 Availability:** Our website is available to accept orders at any time, day or night, so you can place your order when it is most convenient for you.
2. **Easy Ordering:** Our website is user-friendly and intuitive, making it quick and easy to find the products you need and place your order with just a few clicks.
3. **Faster Processing:** When you place your order through our website, it is automatically processed and sent to our team for fulfillment, which can help speed up the delivery process.
4. **Real-time Order Tracking:** Once your order is shipped, you will receive real-time updates on its status, including tracking information, directly through our website.



CONTACT US

Customer Service:
Phone: 800-806-0708
Fax: 909-927-8333
Email: info@musecabinets.com

HOURS OF OPERATION:

Monday – 8 a.m. to 5 p.m.
Tuesday – 8 a.m. to 5 p.m.
Friday – 8 a.m. to 5 p.m.
Wednesday – 8 a.m. to 5 p.m.
Thursday – 8 a.m. to 5 p.m.
Friday – 8 a.m. to 5 p.m.
Saturday – closed
Sunday – closed.

Contact Customer Care with Questions and Concerns about:

- Product availability
- Warranty claims
- Order status
- Tracking
- Technical Issues
- Showroom Display
- Logistics Concerns
- Promotions
- Delivery Service
- Assembly service

TERMS & CONDITIONS

Order Processing & Payment:

Place your order on our website or by email with one of our sales representatives.

Orders are first come, first served – the order must be received by 3 p.m. EST to be entered on the same business day.

Flat pack orders are processed in 24 hours, and assembled orders in 5 business days.

Payment can be made by Credit Card (visa and master card), Debit Card, or Check.

Payment must be received in full before the order is processed.

If paying by check, please allow additional time for the funds to clear.

If you need to RUSH an order, please contact customer service for availability.

If you need to make changes to your order, please contact us as soon as possible. Any changes made after the order has been processed may be subject to additional fees.

If you need to cancel your order, please refer to our cancellation policy for any applicable fees.

Cancellation & Return Policy

If you need to cancel an order after it has been picked by the warehouse crew but has not yet left the warehouse, you will be subject to a 15% cancellation fee.

For complete order exchanges that take place before an order leaves the warehouse, a 10% processing fee will be applied.

If you wish to return unassembled, non-damaged cabinets, there will be a 15% restocking fee.

Please note that all returned products will be inspected by the warehouse before being approved for a refund.

Unfortunately, we cannot accept returns or exchanges for assembled cabinets. We also cannot take TPU back if they have been painted.

Please keep in mind that our orders are processed quickly in order to ensure prompt delivery to our customers, and the processing/restocking fee is in place to ensure the smooth operation of our warehouse and to minimize excessive returns.

TERMS & CONDITIONS - Continued

Local Pick Up

Orders MUST be picked up within two weeks. A storage fee of \$10 per standard pallet per day are subject to any orders over two weeks.

Shipping

In the case of Damaged/Loss items, the shipper or recipient can report a package that has been damaged/loss during shipment pictures by email at the time damage is reported.

- **Recipients** need to indicate on the BOL for obvious damage or shortage in order for the freight claims to be accepted. The shipping company will schedule an inspector to inspect the damaged package(s) to determine the cause of the damage. Once the investigation is complete, a notification letter will be faxed or emailed to the person making the claim.
- **Review Documents:** It is essential that the claimer supplies documentation that supports the actual repair or replacement cost of the merchandise (up to the declared value) as requested in the Damage/ Loss Notification Claim Letter. Supporting documentation can include original invoices, purchase orders, Bill of Lading (BOL), Driver receiving receipt or other information may be required by the shipping company.
- **Claim Payment:** Once the claim has been approved, payment will be processed. The claim payment may differ from the original amount requested depending on the documentation provided. Typically, claim checks are mailed to the claimer's billing address that is on file 3-5 business days after the shipping company receives the required documentation.

Note: Muses Cabinets photographs all shipments in good condition before being shipped. We are not responsible for package damage(s)/loss during shipment. Muses Cabinets is not responsible for shipping charges on reordered items and cannot be held responsible for any labor costs accrued during the installation of any of its products sold via any of its channels of distribution.

TERMS & CONDITIONS - Continued

Assembly and modification

Assembled orders are available for local warehouse pick up only, if you need delivery or freight shipped out, please contact customer service representative.

Payment must be received in full before modifications.

Available modifications:

- Decreased depth.
- Route for Glass insert.

WARRANTY

One Year Limited Warranty

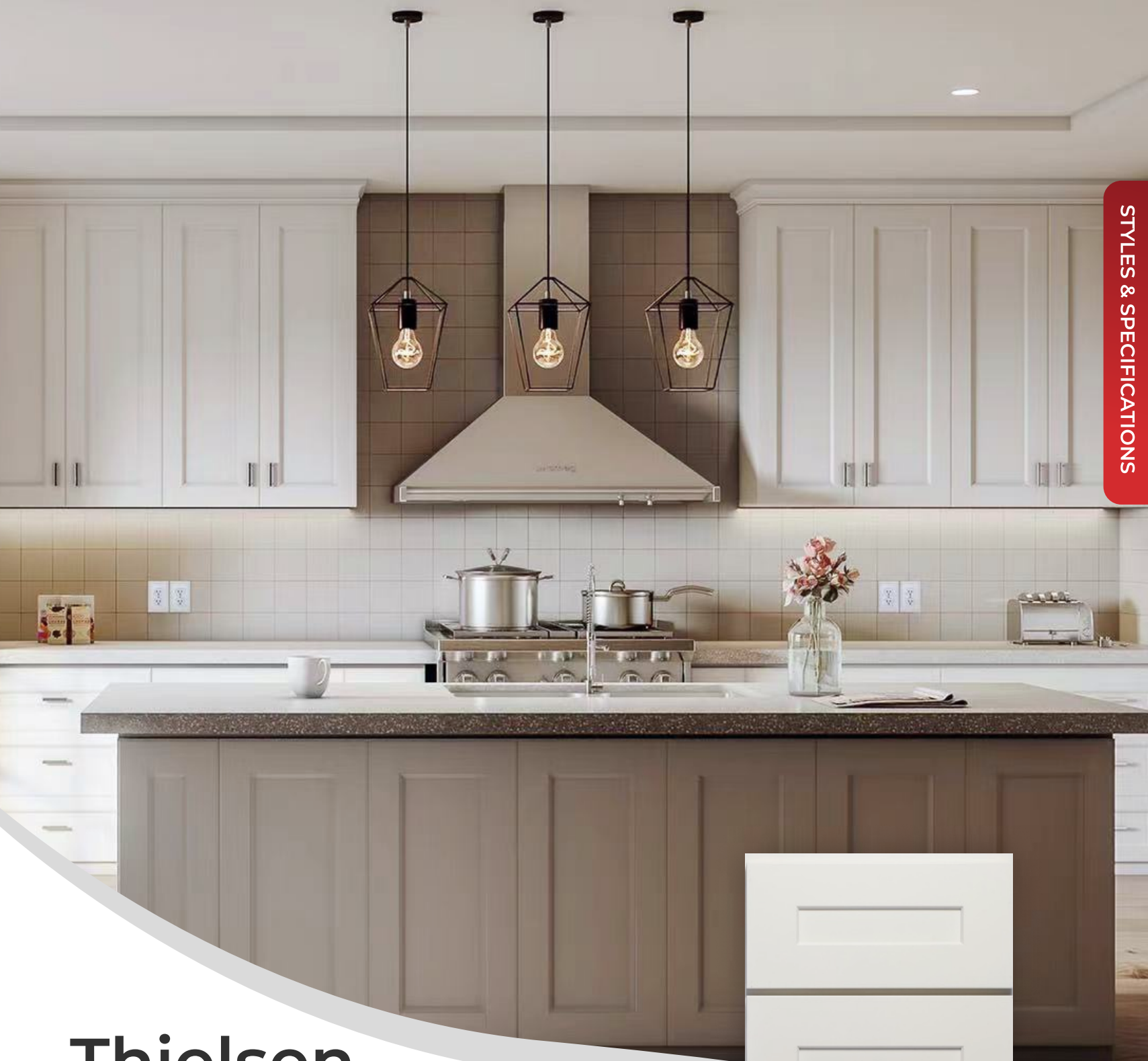
Muses Cabinets offers one year limited lifetime warranty for our cabinets from the date of purchase. This warranty covers factory defects in material and workmanship and is limited to repair or replacement of the defective part at the discretion of Muses Cabinets, and does not include labor for removal or replacement. This warranty only applies to the original consumer purchaser and is not transferable to subsequent owners. This warranty does not extend to defects caused by improper handling, storage, installation, assembly or disassembly, damages, product modifications, exposure to the elements including humidity and heat which may result in damaging the cabinets, misuse, abuse or negligence.

Natural wood may vary in texture, color and wood grain, and exhibit subtle changes as they age. Sunlight, smoke, moisture, household cleaners and other environmental conditions may cause materials to vary from their original color and / or to warp, split or crack. These variations are considered to be the nature of the material in relation to its environmental exposure and not covered under this warranty.

Muses Cabinets periodically updates and makes changes to its product line and specifications. If a warranty claim is filed against obsolete or changed product, Muses Cabinets will replace the part(s) under warranty with a new part of the same style or with a similar style currently offered. Muses Cabinets cannot be held responsible for replacement product that may not exactly match installed product.

Muses Cabinets makes no other warranties other than those set forth herein and all other warranties are hereby disclaimed. In no event shall Muses Cabinets be liable for incidental or consequential damages to the homeowner or to any third party, including, without limitation, damages arising from personal injury, lost profits, loss of business opportunity, loss of property, economic losses, or statutory or exemplary damages, whether from negligence, warranty, strict liability or otherwise.

To submit a warranty claim, the original consumer purchaser must contact the Muses Cabinets dealer or reseller where the product was purchased. A copy of the original dated sales receipt must be presented as proof of purchase. The Muses Cabinets or dealer will contact Muses Cabinets to inspect the product and response.



Thielsen Pegeon White

- Framed Cabinet with Full Overlay Doors and Drawers
- Under Mount Full Extension Soft Close Drawer Glides
- Dovetail drawer, $\frac{3}{4}$ " thick solid wood box sides
- Concealed European Style Hinges with Soft Close Feature
- Five-Piece Solid Wood Door with HDF Center Panel
- $\frac{1}{2}$ " Plywood Box with UV Coated Matching Exterior
- Glue & Staple or Metal Clip Assembly
- Cam Lock Assembly for older batches product
- UV Coated Natural Interior





Thielsen Pebble Gray

- Framed Cabinet with Full Overlay Doors and Drawers
- Under Mount Full Extension Soft Close Drawer Glides
- Dovetail drawer, $\frac{3}{4}$ " thick solid wood box sides
- Concealed European Style Hinges with Soft Close Feature
- Five-Piece Solid Wood Door with HDF Center Panel
- $\frac{1}{2}$ " Plywood Box with UV Coated Matching Exterior
- Glue & Staple or Metal Clip Assembly
- Cam Lock Assembly for older batches product
- UV Coated Natural Interior



Thielsen Espresso

- Framed Cabinet with Full Overlay Doors and Drawers
- Under Mount Full Extension Soft Close Drawer Glides
- Dovetail drawer, $\frac{3}{4}$ " thick solid wood box sides
- Concealed European Style Hinges with Soft Close Feature
- Five-Piece Solid Wood Door with HDF Center Panel
- $\frac{1}{2}$ " Plywood Box with UV Coated Matching Exterior
- Glue & Staple or Metal Clip Assembly
- Cam Lock Assembly for older batches product
- UV Coated Natural Interior





Thielsen Sapphire Blue

- Framed Cabinet with Full Overlay Doors and Drawers
- Under Mount Full Extension Soft Close Drawer Glides
- Dovetail drawer, $\frac{3}{4}$ " thick solid wood box sides
- Concealed European Style Hinges with Soft Close Feature
- Five-Piece Solid Wood Door with HDF Center Panel
- $\frac{1}{2}$ " Plywood Box with UV Coated Matching Exterior
- Glue & Staple or Metal Clip Assembly
- Cam Lock Assembly for older batches product
- UV Coated Natural Interior





Helena Saddle

- Framed Cabinet with Full Overlay Doors and Drawers
- Under Mount Full Extension Soft Close Drawer Glides
- Dovetail drawer, $\frac{3}{4}$ " thick solid wood box sides
- Concealed European Style Hinges with Soft Close Feature
- Five-Piece Solid Wood Door with HDF Center Panel
- $\frac{1}{2}$ " Plywood Box with UV Coated Matching Exterior
- Glue & Staple or Metal Clip Assembly
- Cam Lock Assembly for older batches product
- UV Coated Natural Interior





Modoc Moonshine

- Framed Cabinet with Full Overlay Doors and Drawers
- Under Mount Full Extension Soft Close Drawer Glides
- Dovetail drawer, $\frac{3}{4}$ " thick solid wood box sides
- Concealed European Style Hinges with Soft Close Feature
- Five-Piece Solid Wood Door with Solid Wood Center Panel (Modoc Chocolate) and HDF Center Panel (Modoc Moonshine)
- $\frac{1}{2}$ " Plywood Box with UV Coated Matching Exterior
- Glue & Staple or Metal Clip Assembly
- Cam Lock Assembly for older batches product
- UV Coated Natural Interior





Atlanta White

- Full Overlay Doors and Drawers
- Undermount Full Extension Soft-Close Drawer Glides
- 5-Piece Construction HDF Door
- 1/2 Plywood Box with UV Coated Exterior Matching Color
- UV Coated Natural Interior





For demonstration purpose

Thielsen Primed Unfinished

- Framed Cabinet with Full Overlay Doors and Drawers
- Under Mount Full Extension Soft Close Drawer Glides
- Dovetail drawer, $\frac{3}{4}$ " thick solid wood box sides
- Concealed European Style Hinges with Soft Close Feature
- Five-Piece Solid Wood Door with HDF Center Panel
- $\frac{1}{2}$ " Plywood Box with UV Coated Matching Exterior
- Glue & Staple or Metal Clip Assembly
- UV Coated Natural Interior

MATERIAL & CONSTRUCTION SPECIFICATIONS

European Birch is a strong, fine-grained wood that is mainly off-white in color, although it may contain light hues of yellow-brown or pink. It may also contain natural imperfections which add character and uniqueness to the wood.



1. The finest European Birch is sanded until smooth and vacuumed.
2. An equalizer stain is applied to balance the base color of the wood.
3. A toner is then applied to establish color uniformity.
4. A deep penetrating stain is applied to reveal the hidden beauty of the natural grain.
5. All stained surfaces are hand-rubbed and wiped of excess stain, and slowly air-dried.
6. A wood sealer is then applied, penetrating all exposed wood surfaces for uniform protection.
7. All surfaces are then hand-sanded, providing a smooth, consistent surface.
8. A glaze is applied by hand (if applicable).
9. A color consistency examination is performed with additional touch-up if needed.
10. A final protective topcoat is applied, maximizing resistance to scuffing, moisture, fading and most household chemicals.

MATERIAL & CONSTRUCTION SPECIFICATIONS - Continued



GLASS SIZE

Items	THIELSEN & MODOC LINES (Inch)		HELENA LINE (Inch)	
	Length	Width	Length	Width
WMD1230、WMD2430	24-3/4"	6-13/16"	24-3/8"	6-7/16"
WMD1236、WMD2436	30-3/4"	6-13/16"	30-3/8"	6-7/16"
WMD1242、WMD2442	36-3/4"	6-13/16"	36-3/8"	6-7/16"
WMD1530、WMD3030	24-3/4"	9-13/16"	24-3/8"	9-7/16"
WMD1536、WMD3036	30-3/4"	9-13/16"	30-3/8"	9-7/16"
WMD1542、WMD3042	36-3/4"	9-13/16"	36-3/8"	9-7/16"
WMD1830、WMD3630	24-3/4"	12-13/16"	24-3/8"	12-7/16"
WMD1836、WMD3636	30-3/4"	12-13/16"	30-3/8"	12-7/16"
WMD1842、WMD3642	36-3/4"	12-13/16"	36-3/8"	12-7/16"
WMD2130	24-3/4"	15-13/16"	24-3/8"	15-7/16"
WMD2136	30-3/4"	15-13/16"	30-3/8"	15-7/16"
WMD2142	36-3/4"	15-13/16"	36-3/8"	15-7/16"
WMD2730	24-3/4"	8-3/8"	24-3/8"	8"
WMD2736	30-3/4"	8-3/8"	30-3/8"	8"
WMD2742	36-3/4"	8-3/8"	36-3/8"	8"
WMD3024	18-5/8"	9-3/8"	-	-

GLASS SIZE - Continued

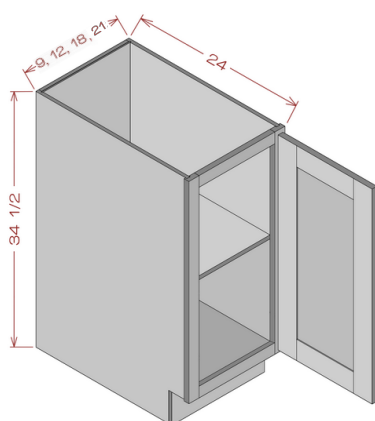
Items	THIELSEN & MODOC LINES (Inch)		HELENA LINE (Inch)	
	Length	Width	Length	Width
WMD3330	24-3/4"	11-3/8"	-	-
WMD3336	30-3/4"	11-3/8"	-	-
WMD3342	36-3/4"	11-3/8"	-	-
WDCMD2430	24-3/4"	10-3/16"	24-3/8"	9-13/16"
WDCMD2436	30-3/4"	10-3/16"	30-3/8"	9-13/16"
WDCMD2442	36-3/4"	10-3/16"	36-3/8"	9-13/16"
WDCMD2412	6-5/8"	10-1/4"	-	-
WMD1212	6-5/8"	6-3/4"	-	-
WMD1512	6-5/8"	9-3/4"	-	-
WMD1812	6-5/8"	12-3/4"	-	-
WMD2112	6-5/8"	15-3/4"	-	-
WMD2412	6-5/8"	6-3/4"	-	-
WMD2712	6-5/8"	8-1/4"	-	-
WMD3012	6-5/8"	9-3/4"	-	-
WMD3018	12-5/8"	9-3/4"	-	-
WMD3024	18-5/8"	9-3/4"	-	-
WMD3312	6-5/8"	11-3/8"	-	-

GLASS SIZE - Continued

Items	THIELSEN & MODOC LINES (Inch)		HELENA LINE (Inch)	
	Length	Width	Length	Width
WMD3612				
WMD3912				
WERMD2412				

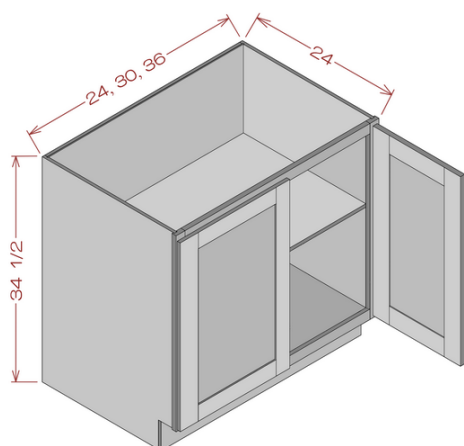
SKUS & SPECIFICATIONS: BASE CABINETS

Base Cabinet Full Height Door - Single Door



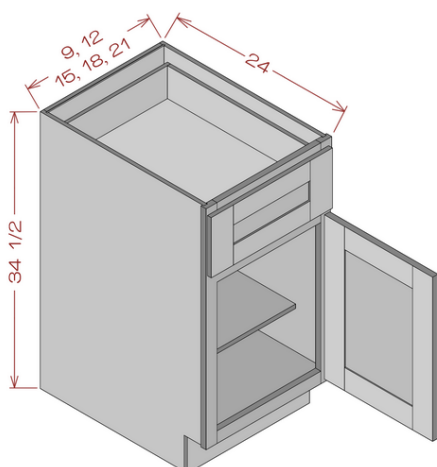
Model	Description	Width	Height	Depth
B09FHD	Cabinet Dimension	9"	34-1/2"	24"
	Door Dimension	8-3/4"	29"	3/4"
B12FHD	Cabinet Dimension	12"	34-1/2"	24"
	Door Dimension	11-3/4"	29"	3/4"
B18FHD	Cabinet Dimension	18"	34-1/2"	24"
	Door Dimension	17-5/8"	29"	3/4"
B21FHD	Cabinet Dimension	21"	34-1/2"	24"
	Door Dimension	20-5/8"	29"	3/4"

Base Cabinet Full Height Door - Double Door



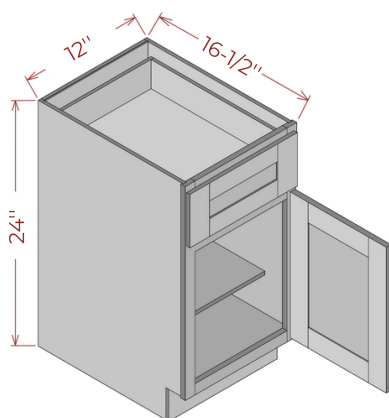
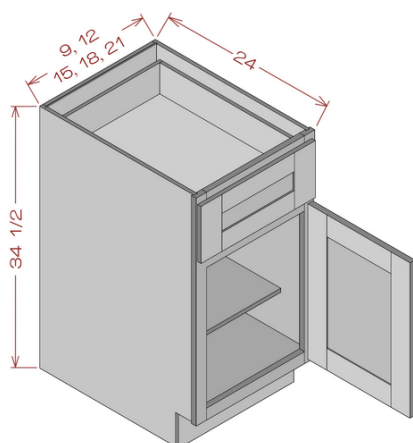
Model	Description	Width	Height	Depth
B24FHD	Cabinet Dimension	24"	34-1/2"	24"
	Door Dimension	11-3/4"	29"	3/4"
B30FHD	Cabinet Dimension	30"	34-1/2"	24"
	Door Dimension	14-5/8"	29"	3/4"
B36FHD	Cabinet Dimension	36"	34-1/2"	24"
	Door Dimension	17-5/8"	29"	3/4"

Single Door Single Drawer Base



Model	Description	Width	Height	Depth
B09	Cabinet Dimension	9"	34-1/2"	24"
	Door Dimension	8-3/4"	21-7/8"	3/4"
	Drawer Front	8-3/4"	6-7/8"	3/4"
	Drawer Box	4"	3-1/4"	19-5/8"
B12	Cabinet Dimension	12"	34-1/2"	24"
	Door Dimension	11-3/4"	21-7/8"	3/4"
	Drawer Front	11-3/4"	6-7/8"	3/4"
	Drawer Box	7"	3-1/4"	19-5/8"

Single Door Single Drawer Base

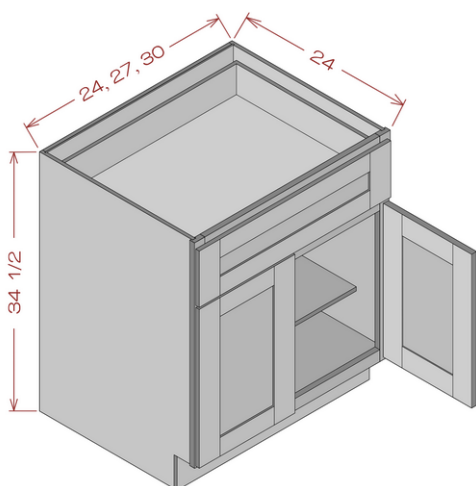


Model	Description	Width	Height	Depth
B15	Cabinet Dimension	15"	34-1/2"	24"
	Door Dimension	14-5/8"	21-7/8"	3/4"
	Drawer Front	14-5/8"	6-7/8"	3/4"
	Drawer Box	10"	3-1/4"	19-5/8"
B18	Cabinet Dimension	18"	34-1/2"	24"
	Door Dimension	17-5/8"	21-7/8"	3/4"
	Drawer Front	17-5/8"	6-7/8"	3/4"
	Drawer Box	13"	3-1/4"	19-5/8"
B21	Cabinet Dimension	21"	34-1/2"	24"
	Door Dimension	20-5/8"	21-7/8"	3/4"
	Drawer Front	20-5/8"	6-7/8"	3/4"
	Drawer Box	16"	3-1/4"	19-5/8"

Model	Description	Width	Height	Depth
B12mini	Cabinet Dimension	12"	24"	16-1/2"
	Door Dimension	11-3/4"	11-3/8"	3/4"
	Drawer Front	11-3/4"	6-7/8"	3/4"
	Drawer Box	7"	2-1/4"	13-3/4"

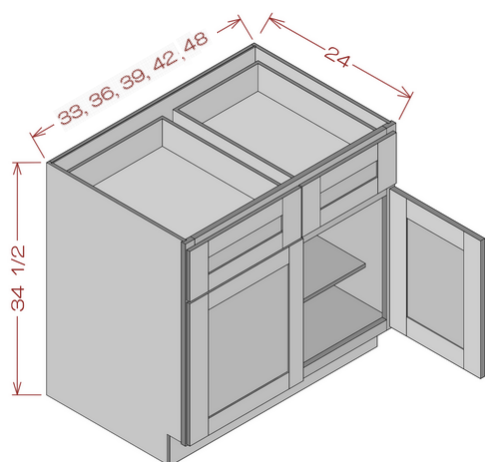
* - only for demonstration

Double Door Single Drawer Base



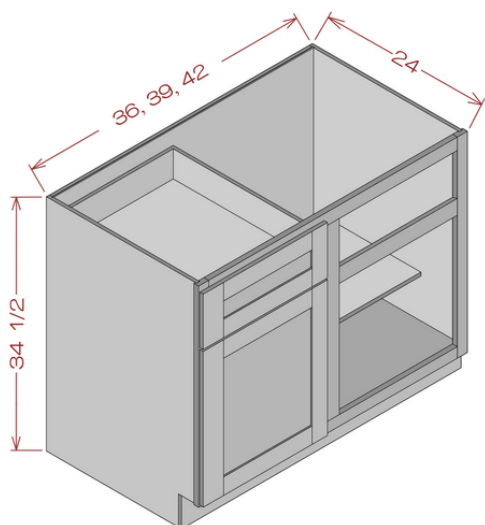
Model	Description	Width	Height	Depth
B24	Cabinet Dimension	24"	34-1/2"	24"
	Door Dimension	11-3/4"	21-7/8"	3/4"
	Drawer Front	23-1/2"	6-7/8"	3/4"
	Drawer Box	19"	3-1/4"	19-5/8"
B27	Cabinet Dimension	27"	34-1/2"	24"
	Door Dimension	13-1/4"	21-7/8"	3/4"
	Drawer Front	26-5/8"	6-7/8"	3/4"
	Drawer Box	22"	3-1/4"	19-5/8"
B30	Cabinet Dimension	30"	34-1/2"	24"
	Door Dimension	14-5/8"	21-7/8"	3/4"
	Drawer Front	29-1/2"	6-7/8"	3/4"
	Drawer Box	25"	3-1/4"	19-5/8"

Double Door Double Drawer Base



Model	Description	Width	Height	Depth
B33-2	Cabinet Dimension	33"	34-1/2"	24"
	Door Dimension	16-1/4"	21-7/8"	3/4"
	Drawer Front	16-1/4"	6-7/8"	3/4"
	Drawer Box	11-5/8"	3-1/4"	19-5/8"
B36-2	Cabinet Dimension	36"	34-1/2"	24"
	Door Dimension	17-5/8"	21-7/8"	3/4"
	Drawer Front	17-5/8"	6-7/8"	3/4"
	Drawer Box	13"	3-1/4"	19-5/8"
B39-2	Cabinet Dimension	39"	34-1/2"	24"
	Door Dimension	19-1/4"	21-7/8"	3/4"
	Drawer Front	19-1/4"	6-7/8"	3/4"
	Drawer Box	14-5/8"	3-1/4"	19-5/8"
B42-2	Cabinet Dimension	42"	34-1/2"	24"
	Door Dimension	20-5/8"	21-7/8"	3/4"
	Drawer Front	20-5/8"	6-7/8"	3/4"
	Drawer Box	16"	3-1/4"	19-5/8"
B48-2	Cabinet Dimension	48"	34-1/2"	24"
	Door Dimension	23-5/8"	21-7/8"	3/4"
	Drawer Front	23-5/8"	6-7/8"	3/4"
	Drawer Box	19"	3-1/4"	19-5/8"

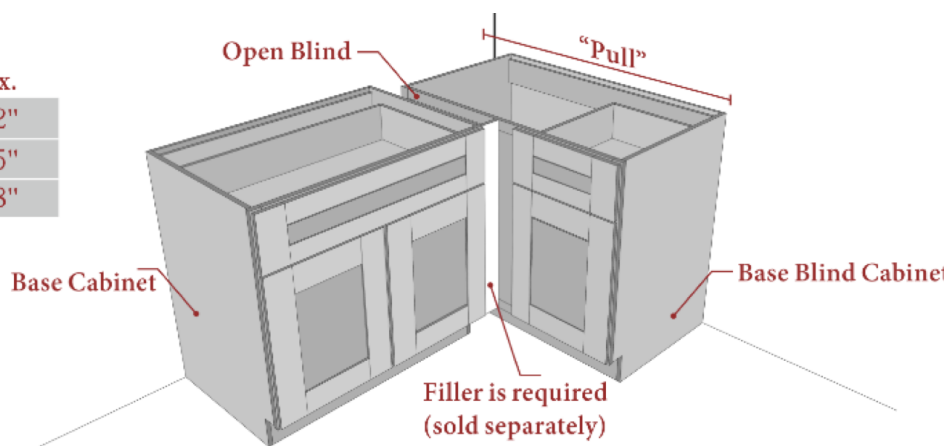
Blind Corner Base



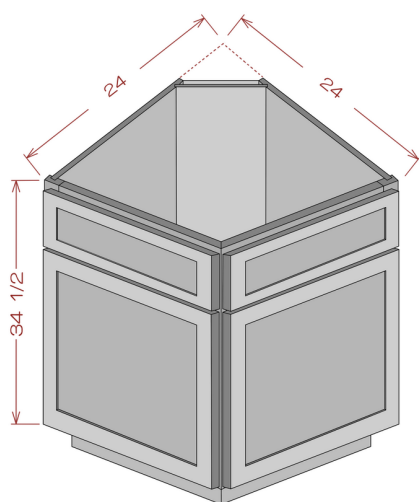
Model	Description	Width	Height	Depth
BBC36	Cabinet Dimension	36"	34-1/2"	24"
	Door Dimension	11-3/4"	21-7/8"	3/4"
	Drawer Front	11-3/4"	6-7/8"	3/4"
	Drawer Box	7"	3-1/4"	19-5/8"
	Door Opening	8-7/8"	19-7/8"	3/4"
BBC39	Cabinet Dimension	39"	34-1/2"	24"
	Door Dimension	14-5/8"	21-7/8"	3/4"
	Drawer Front	14-5/8"	6-7/8"	3/4"
	Drawer Box	10"	3-1/4"	19-5/8"
	Door Opening	11-7/8"	19-7/8"	3/4"
BBC42	Cabinet Dimension	42"	34-1/2"	24"
	Door Dimension	17-5/8"	21-7/8"	3/4"
	Drawer Front	17-5/8"	6-7/8"	3/4"
	Drawer Box	13"	3-1/4"	19-5/8"
	Door Opening	14-7/8"	19-7/8"	3/4"

Blind Corner Base

SKU	Min.	Max.
BBC36	36"	42"
BBC39	39"	45"
BBC42	32"	48"

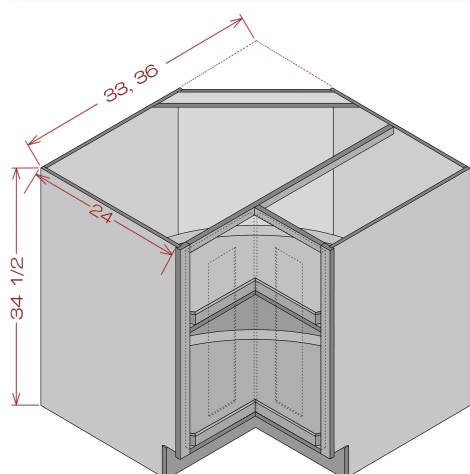


Base End Corner



Model	Description	Width	Height	Depth
BEC24	Cabinet Dimension	24"	34-1/2"	24"
	Door Dimension	18"	21-7/8"	3/4"
	Drawer Front	18"	6-7/8"	3/4"

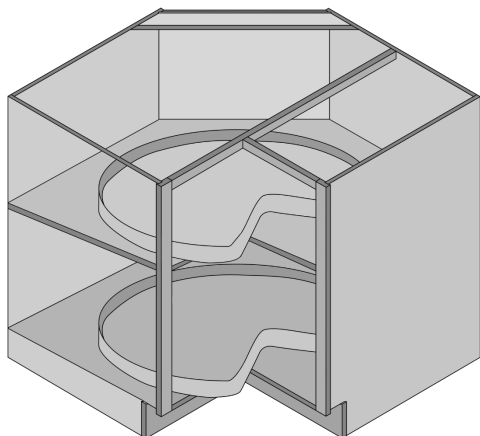
Base Easy Reach



Model	Description	Width	Height	Depth
BER33	Cabinet Dimension	33"	34-1/2"	24"
	Door Dimension	7"	29"	3/4"
BER36	Cabinet Dimension	36"	34-1/2"	24"
	Door Dimension	10"	29"	3/4"

*If you would like to make this cabinet a Lazy Susan, Please add a Wooden Table to your order. Wooden table works for both BER33 & BER36

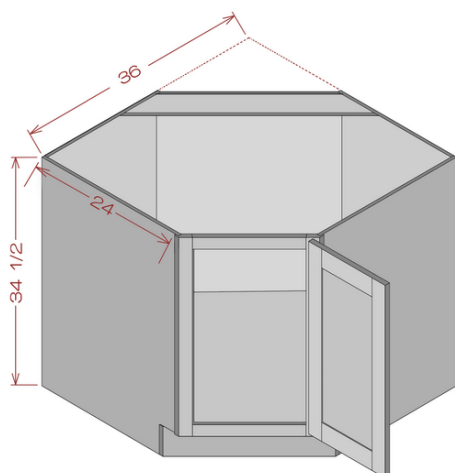
Lazy Susan Wooden Table



Model	Description	Size
Wooden Table	Table Radius	26-9/16"

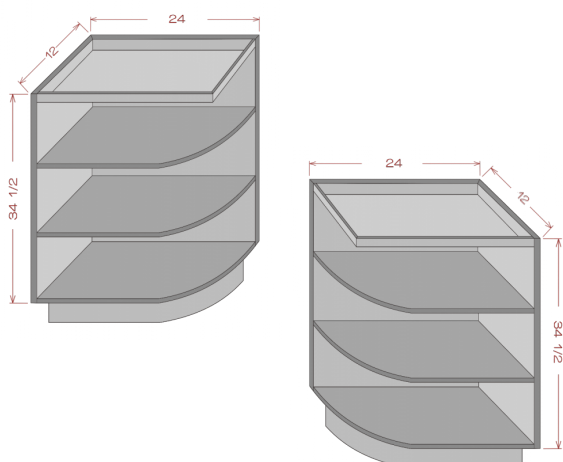
* - one set comes with 2 pieces of the turn-tables

Base Diagonal Corner Cabinet



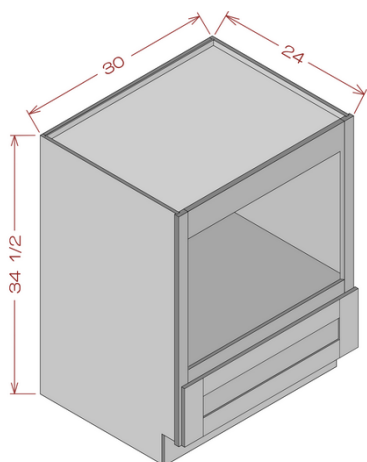
Model	Description	Width	Height	Depth
BDC36	Cabinet Dimension	36"	34-1/2"	24"
	Door Dimension	15"	29"	3/4"
	Door Opening	12-2/5"	26-7/8"	-

Base Wall End Shelf



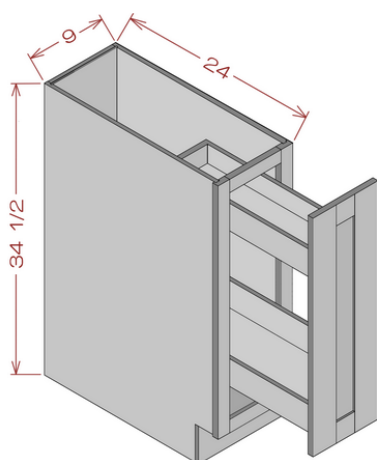
Model	Description	Width	Height	Depth
BES12R	Cabinet Dimension	12"	34-1/2"	24"
BES12L	Cabinet Dimension	12"	34-1/2"	24"

Base Microwave Cabinet



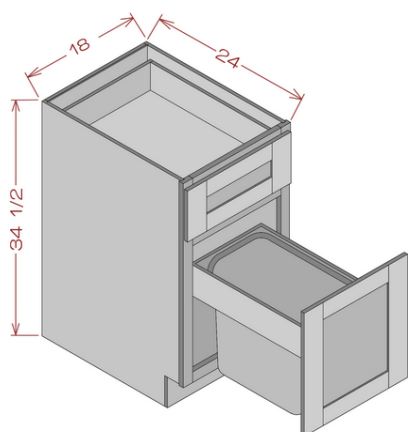
Model	Description	Width	Height	Depth
BM30	Cabinet Dimension	30"	34-1/2"	24"
	Drawer Front	29-1/2"	6-7/8"	3/4"
	Drawer Box	25"	3-1/4"	19-5/8"
	The Opening Dimension	26-7/8"	16-3/4"	-

Base Spice Rack



Model	Description	Width	Height	Depth
BSR09	Cabinet Dimension	9"	34-1/2"	24"
	Drawer Front	8-3/4"	29"	3/4"

Base Wastebasket

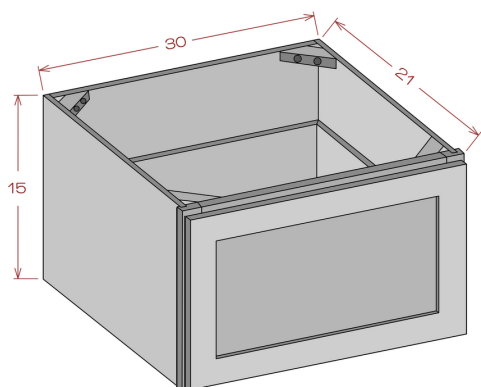


Model	Description	Width	Height	Depth
BWBK18-1	Cabinet Dimension	18"	34-1/2"	24"
	Top Drawer Front	17-21/32"	6-7/8"	3/4"
	Bottom Drawer Front	17-21/32"	21-7/8"	3/4"
	Top Drawer Box	13"	3-1/4"	19-5/8"

Size of the bin:

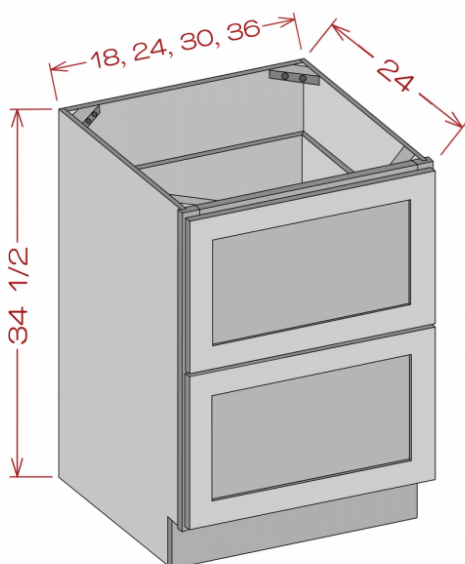
Width - 10-1/2"	Capacity - 28 qt
Height - 14-1/2"	7 gallons
Depth - 15"	

1-Drawer Base Cabinet



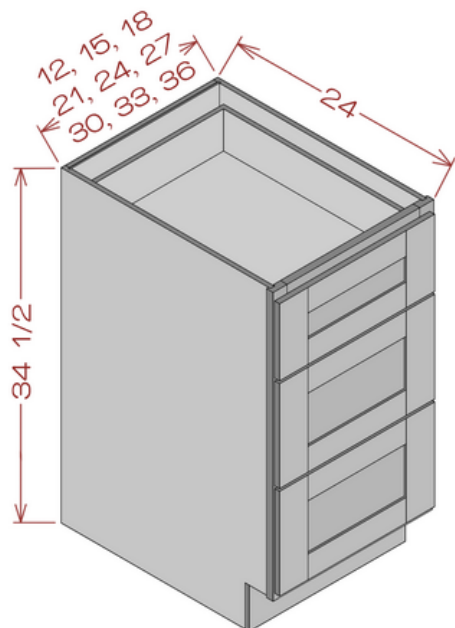
Model	Description	Width	Height	Depth
DB30-1	Cabinet Dimension	30"	15"	21"
	Drawer Front	29-1/2"	14"	3/4"
	Drawer Box	25-5/8"	10-1/8"	17-1/2"

2-Drawer Base Cabinet



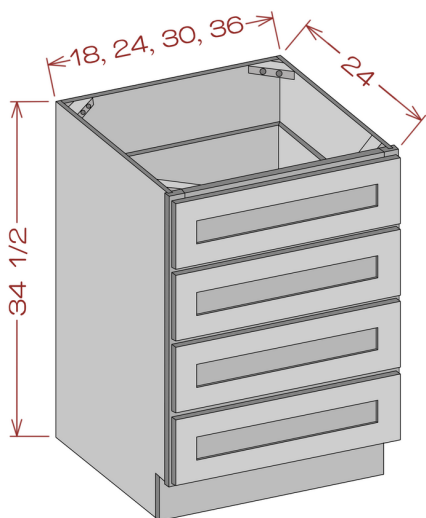
Model	Description	Width	Height	Depth
DB18-2	Cabinet Dimension	18"	34-1/2"	24"
	Drawer Front	17-5/8"	14-3/8"	3/4"
	Drawer Box	13"	9-3/8"	19-5/8"
DB24-2	Cabinet Dimension	24"	34-1/2"	24"
	Drawer Front	13-1/2"	14-3/8"	3/4"
	Drawer Box	19"	9-3/8"	19-5/8"
DB30-2	Cabinet Dimension	30"	34-1/2"	24"
	Drawer Front	29-1/2"	14-3/8"	3/4"
	Drawer Box	25"	9-3/8"	19-5/8"
DB36-2	Cabinet Dimension	36"	34-1/2"	24"
	Drawer Front	35-1/2"	14-3/8"	3/4"
	Drawer Box	31"	9-3/8"	19-5/8"

3-Drawer Base Cabinet



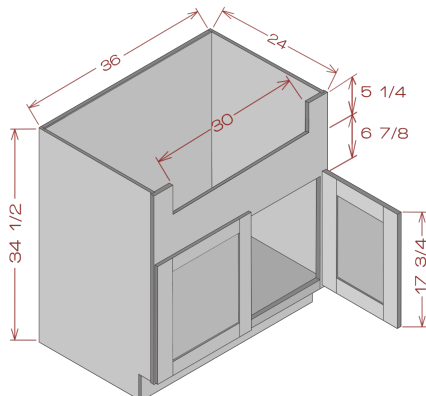
Model	Description	Width	Height	Depth
DB12-3	Cabinet Dimension	12"	34-1/2"	24"
	Top Drawer Front	11-3/4"	6-7/8"	3/4"
	Bottom Drawer Front	11-3/4"	10-7/8"	3/4"
	Top Drawer Box	7"	3-1/4"	19-5/8"
	Bottom Drawer Box	7"	6-1/4"	19-5/8"
DB15-3	Cabinet Dimension	15"	34-1/2"	24"
	Top Drawer Front	14-5/8"	6-7/8"	3/4"
	Bottom Drawer Front	14-5/8"	10-7/8"	3/4"
	Top Drawer Box	10"	3-1/4"	19-5/8"
	Bottom Drawer Box	10"	6-1/4"	19-5/8"
DB18-3	Cabinet Dimension	18"	34-1/2"	24"
	Top Drawer Front	17-5/8"	6-7/8"	3/4"
	Bottom Drawer Front	17-5/8"	10-7/8"	3/4"
	Top Drawer Box	13"	3-1/4"	19-5/8"
	Bottom Drawer Box	13"	6-1/4"	19-5/8"
DB21-3	Cabinet Dimension	21"	34-1/2"	24"
	Top Drawer Front	20-5/8"	6-7/8"	3/4"
	Bottom Drawer Front	20-5/8"	10-7/8"	3/4"
	Top Drawer Box	16"	3-1/4"	19-5/8"
	Bottom Drawer Box	16"	6-1/4"	19-5/8"
DB24-3	Cabinet Dimension	24"	34-1/2"	24"
	Top Drawer Front	23-1/2"	6-7/8"	3/4"
	Bottom Drawer Front	23-1/2"	10-7/8"	3/4"
	Top Drawer Box	19"	3-1/4"	19-5/8"
	Bottom Drawer Box	19"	6-1/4"	19-5/8"
DB27-3	Cabinet Dimension	27"	34-1/2"	24"
	Top Drawer Front	26-5/8"	6-7/8"	3/4"
	Bottom Drawer Front	26-5/8"	10-7/8"	3/4"
	Top Drawer Box	22"	3-1/4"	19-5/8"
	Bottom Drawer Box	22"	6-1/4"	19-5/8"
DB30-3	Cabinet Dimension	30"	34-1/2"	24"
	Top Drawer Front	29-1/2"	6-7/8"	3/4"
	Bottom Drawer Front	29-1/2"	10-7/8"	3/4"
	Top Drawer Box	25"	3-1/4"	19-5/8"
	Bottom Drawer Box	25"	6-1/4"	19-5/8"
DB33-3	Cabinet Dimension	33"	34-1/2"	24"
	Top Drawer Front	32-5/8"	6-7/8"	3/4"
	Bottom Drawer Front	32-5/8"	10-7/8"	3/4"
	Top Drawer Box	28"	3-1/4"	19-5/8"
	Bottom Drawer Box	28"	6-1/4"	19-5/8"
DB36-3	Cabinet Dimension	36"	34-1/2"	24"
	Top Drawer Front	35-1/2"	6-7/8"	3/4"
	Bottom Drawer Front	35-1/2"	10-7/8"	3/4"
	Top Drawer Box	31"	3-1/4"	19-5/8"
	Bottom Drawer Box	31"	6-1/4"	19-5/8"

4-Drawer Base Cabinet



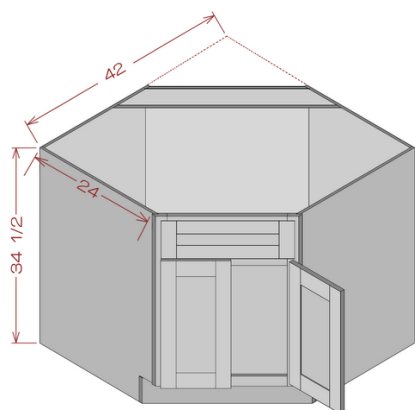
Model	Description	Width	Height	Depth
DB18-4	Cabinet Dimension	18"	34-1/2"	24"
	Drawer Front	17-5/8"	6-7/8"	3/4"
	Drawer Box	13"	3-1/4"	19-5/8"
DB24-4	Cabinet Dimension	24"	34-1/2"	24"
	Drawer Front	23-1/2"	6-7/8"	3/4"
	Drawer Box	19"	3-1/4"	19-5/8"
DB30-4	Cabinet Dimension	30"	34-1/2"	24"
	Drawer Front	29-1/2"	6-7/8"	3/4"
	Drawer Box	25"	3-1/4"	19-5/8"
DB36-4	Cabinet Dimension	36"	34-1/2"	24"
	Drawer Front	35-1/2"	6-7/8"	3/4"
	Drawer Box	30-7/8"	3-1/4"	19-5/8"

Farm Sink Base Cabinet



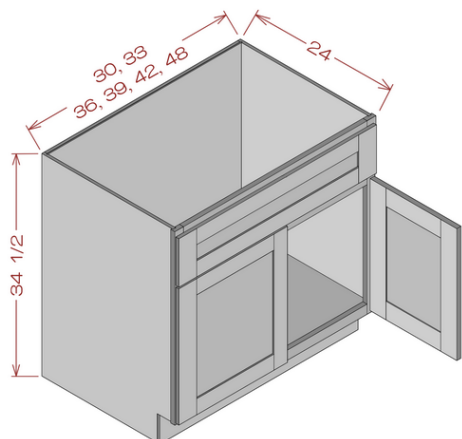
Model	Description	Width	Height	Depth
FSB36	Cabinet Dimension	36"	34-1/2"	24"
	Door Dimension	17-5/8"	17-3/4"	3/4"
	Opening Dimension	30"	5-1/4"	-
	Apron	36"	8-11/32"	-

Diagonal Corner Sink Base Cabinet



Model	Description	Width	Height	Depth
NCSB42	Cabinet Dimension	42"	34-1/2"	24"
	Door Dimension	11-3/4"	21-7/8"	3/4"
	Drawer Front	23-1/2"	6-7/8"	3/4"

Sink Base Cabinet

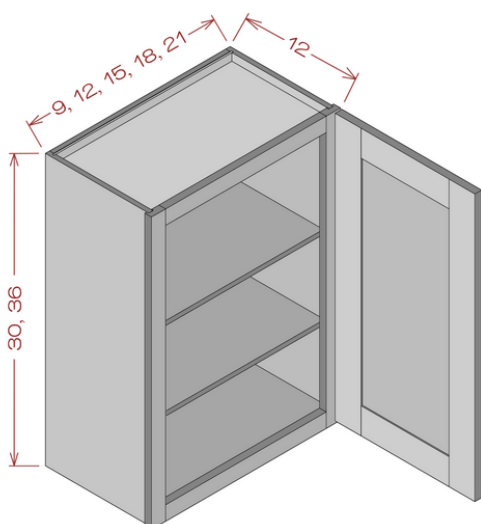


Model	Description	Width	Height	Depth
SB30	Cabinet Dimension	30"	34-1/2"	24"
	Door Dimension	14-5/8"	21-7/8"	3/4"
	Drawer Front	29-1/2"	6-7/8"	3/4"
SB33	Cabinet Dimension	33"	34-1/2"	24"
	Door Dimension	16-1/4"	21-7/8"	3/4"
	Drawer Front	32-1/2"	6-7/8"	3/4"
SB36	Cabinet Dimension	36"	34-1/2"	24"
	Door Dimension	17-5/8"	21-7/8"	3/4"
	Drawer Front	35-1/2"	6-7/8"	3/4"
SB39	Cabinet Dimension	39"	34-1/2"	24"
	Door Dimension	19-1/4"	21-7/8"	3/4"
	Drawer Front	38-1/2"	6-7/8"	3/4"
SB42	Cabinet Dimension	42"	34-1/2"	24"
	Door Dimension	20-5/8"	21-7/8"	3/4"
	Drawer Front	41-1/2"	6-7/8"	3/4"
SB48*	Cabinet Dimension	48"	34-1/2"	24"
	Door Dimension	23-5/8"	21-7/8"	3/4"
	Drawer Front	47-1/2"	6-7/8"	3/4"

* - Not available for all styles.

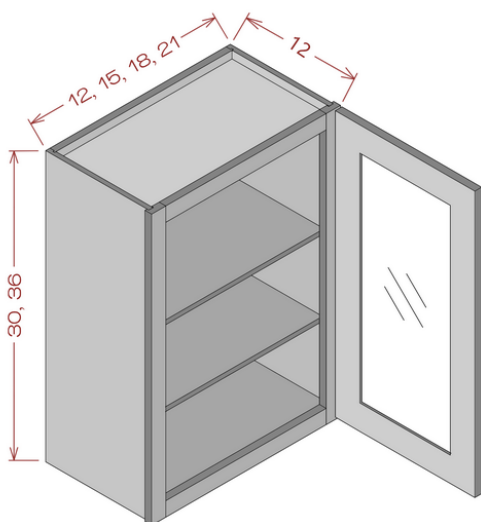
WALL CABINETS

30" Height Single Door Wall Cabinet



Model	Description	Width	Height	Depth
W0930	Cabinet Dimension	9"	30"	12"
	Door Dimension	8-3/4"	29-5/8"	3/4"
	Opening Dimension	5-7/8"	26-7/8"	3/4"
W1230	Cabinet Dimension	12"	30"	12"
	Door Dimension	11-3/4"	29-5/8"	3/4"
	Opening Dimension	8-7/8"	26-7/8"	3/4"
W1530	Cabinet Dimension	15"	30"	12"
	Door Dimension	14-3/4"	29-5/8"	3/4"
	Opening Dimension	11-7/8"	26-7/8"	3/4"
W1830	Cabinet Dimension	18"	30"	12"
	Door Dimension	17-3/4"	29-5/8"	3/4"
	Opening Dimension	14-7/8"	26-7/8"	3/4"
W2130	Cabinet Dimension	21"	30"	12"
	Door Dimension	20-3/4"	29-5/8"	3/4"
	Opening Dimension	17-7/8"	26-7/8"	3/4"

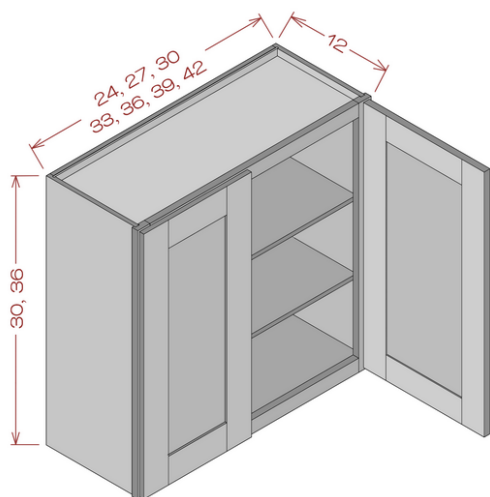
30" Height Single Glass Door Wall Cabinet



Model	Description	Width	Height	Depth
WMD1230	Cabinet Dimension	12"	30"	12"
	Door Dimension	11-3/4"	29-5/8"	3/4"
	Glass Cut Out Dimensions*	6-15/16"	24-7/8"	-
WMD1530	Cabinet Dimension	15"	30"	12"
	Door Dimension	14-3/4"	29-5/8"	3/4"
	Glass Cut Out Dimensions*	9-15/16"	24-7/8"	-
WMD1830	Cabinet Dimension	18"	30"	12"
	Door Dimension	17-3/4"	29-5/8"	3/4"
	Glass Cut Out Dimensions*	12-15/16"	24-7/8"	-
WMD2130	Cabinet Dimension	21"	30"	12"
	Door Dimension	20-3/4"	29-5/8"	3/4"
	Glass Cut Out Dimensions*	15-15/16"	24-7/8"	-

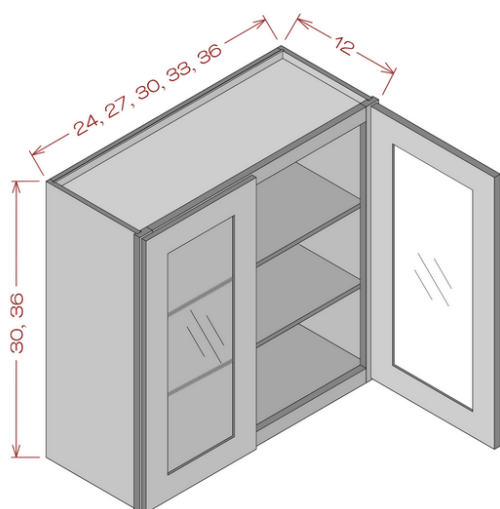
* - Specified Dimensions are for Thielsen/Modoc lines. For others check p. 18

30" Height Double Door Wall Cabinet



Model	Description	Width	Height	Depth
W2430	Cabinet Dimension	24"	30"	12"
	Door Dimension	11-3/4"	29-5/8"	3/4"
	Opening Dimension	20-7/8"	26-7/8"	3/4"
W2730	Cabinet Dimension	27"	30"	12"
	Door Dimension	13-1/4"	29-5/8"	3/4"
	Opening Dimension	23-7/8"	26-7/8"	3/4"
W3030	Cabinet Dimension	30"	30"	12"
	Door Dimension	14-5/8"	29-5/8"	3/4"
	Opening Dimension	26-7/8"	26-7/8"	3/4"
W3330	Cabinet Dimension	33"	30"	12"
	Door Dimension	16-1/4"	29-5/8"	3/4"
	Opening Dimension	29-7/8"	26-7/8"	3/4"
W3630	Cabinet Dimension	36"	30"	12"
	Door Dimension	17-5/8"	29-5/8"	3/4"
	Opening Dimension	32-7/8"	26-7/8"	3/4"
W3930	Cabinet Dimension	39"	30"	12"
	Door Dimension	19-1/4"	29-5/8"	3/4"
	Opening Dimension	35-7/8"	26-7/8"	3/4"
W4230	Cabinet Dimension	42"	30"	12"
	Door Dimension	23-5/8"	29-5/8"	3/4"
	Opening Dimension	38-7/8"	26-7/8"	3/4"

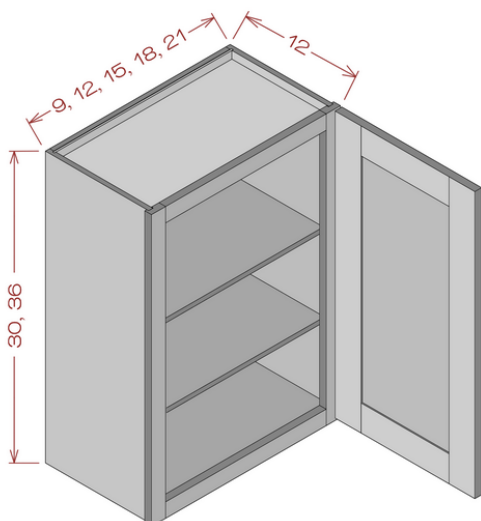
30" Height Double Glass Door Wall Cabinet



Model	Description	Width	Height	Depth
WMD2430	Cabinet Dimension	24"	30"	12"
	Door Dimension	11-3/4"	29-5/8"	3/4"
	Glass Cut Out Dimensions*	6-15/16"	24-7/8"	-
WMD2730	Cabinet Dimension	27"	30"	12"
	Door Dimension	13-1/4"	29-5/8"	3/4"
	Glass Cut Out Dimensions*	8-9/16"	24-7/8"	-
WMD3030	Cabinet Dimension	30"	30"	12"
	Door Dimension	14-5/8"	29-5/8"	3/4"
	Glass Cut Out Dimensions*	9-15/16"	24-7/8"	-
WMD3330	Cabinet Dimension	33"	30"	12"
	Door Dimension	16-1/4"	29-5/8"	3/4"
	Glass Cut Out Dimensions*	11-9/16"	24-7/8"	-
WMD3630	Cabinet Dimension	36"	30"	12"
	Door Dimension	17-5/8"	29-5/8"	3/4"
	Glass Cut Out Dimensions*	12-15/16"	24-7/8"	-

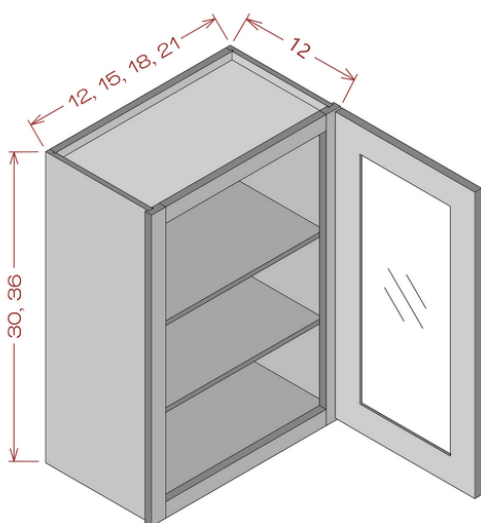
* - Specified Dimensions are for Thielsen/Modoc lines. For others check p. 18

36" Height Single Door Wall Cabinet



Model	Description	Width	Height	Depth
W0936	Cabinet Dimension	9"	36"	12"
	Door Dimension	8-3/4"	35-5/8"	3/4"
	Opening Dimension	5-7/8"	32-7/8"	3/4"
W1236	Cabinet Dimension	12"	36"	12"
	Door Dimension	11-3/4"	35-5/8"	3/4"
	Opening Dimension	8-7/8"	32-7/8"	3/4"
W1536	Cabinet Dimension	15"	36"	12"
	Door Dimension	14-3/4"	35-5/8"	3/4"
	Opening Dimension	11-7/8"	32-7/8"	3/4"
W1836	Cabinet Dimension	18"	36"	12"
	Door Dimension	17-3/4"	35-5/8"	3/4"
	Opening Dimension	14-7/8"	32-7/8"	3/4"
W2136	Cabinet Dimension	21"	36"	12"
	Door Dimension	20-3/4"	35-5/8"	3/4"
	Opening Dimension	17-7/8"	32-7/8"	3/4"

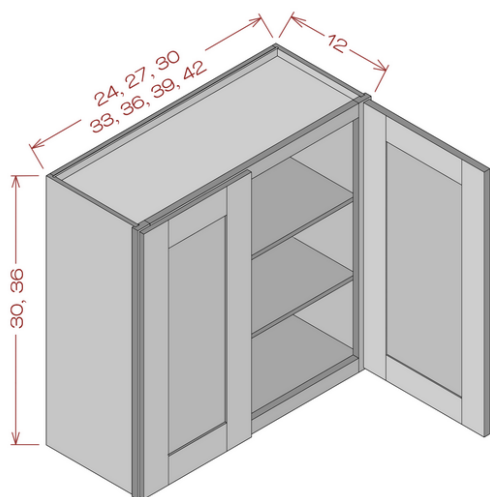
36" Height Glass Single Door Wall Cabinet



Model	Description	Width	Height	Depth
WMD1236	Cabinet Dimension	12"	36"	12"
	Door Dimension	11-3/4"	35-5/8"	3/4"
	Glass Cut Out Dimensions*	6-15/16"	31"	-
WMD1536	Cabinet Dimension	15"	36"	12"
	Door Dimension	14-3/4"	35-5/8"	3/4"
	Glass Cut Out Dimensions*	9-15/16"	31"	-
WMD1836	Cabinet Dimension	18"	36"	12"
	Door Dimension	17-3/4"	35-5/8"	3/4"
	Glass Cut Out Dimensions*	12-15/16"	31"	-
WMD2136	Cabinet Dimension	21"	36"	12"
	Door Dimension	20-3/4"	35-5/8"	3/4"
	Glass Cut Out Dimensions*	15-15/16"	31"	-

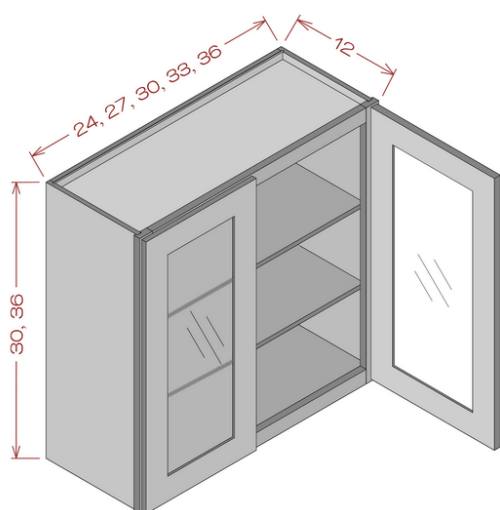
* - Specified Dimensions are for Thielsen/Modoc lines. For others check p. 18

36" Height Double Door Wall Cabinet



Model	Description	Width	Height	Depth
W2436	Cabinet Dimension	24"	36"	12"
	Door Dimension	11-3/4"	35-5/8"	3/4"
	Opening Dimension	20-7/8"	32-7/8"	3/4"
W2736	Cabinet Dimension	27"	36"	12"
	Door Dimension	13-1/4"	35-5/8"	3/4"
	Opening Dimension	23-7/8"	32-7/8"	3/4"
W3036	Cabinet Dimension	30"	36"	12"
	Door Dimension	14-5/8"	35-5/8"	3/4"
	Opening Dimension	26-7/8"	32-7/8"	3/4"
W3336	Cabinet Dimension	33"	36"	12"
	Door Dimension	16-1/4"	35-5/8"	3/4"
	Opening Dimension	29-7/8"	32-7/8"	3/4"
W3636	Cabinet Dimension	36"	36"	12"
	Door Dimension	17-5/8"	35-5/8"	3/4"
	Opening Dimension	32-7/8"	32-7/8"	3/4"
W3936	Cabinet Dimension	39"	36"	12"
	Door Dimension	19-1/4"	35-5/8"	3/4"
	Opening Dimension	35-7/8"	32-7/8"	3/4"
W4236	Cabinet Dimension	42"	36"	12"
	Door Dimension	20-5/8"	35-5/8"	3/4"
	Opening Dimension	38-7/8"	32-7/8"	3/4"

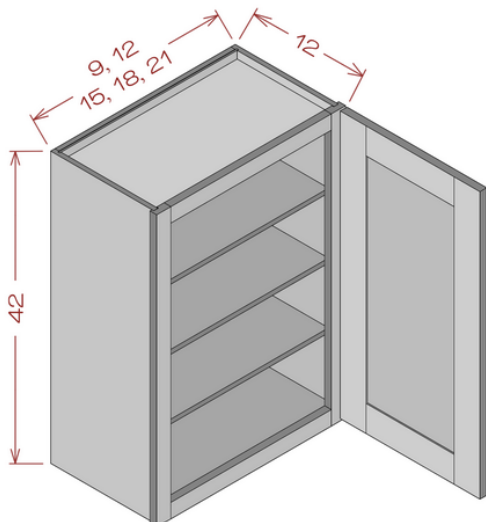
36" Height Double Glass Door Wall Cabinet



Model	Description	Width	Height	Depth
WMD2436	Cabinet Dimension	24"	36"	12"
	Door Dimension	11-3/4"	35-5/8"	3/4"
	Glass Cut Out Dimensions*	6-15/16"	31"	-
WMD2736	Cabinet Dimension	27"	36"	12"
	Door Dimension	13-1/4"	35-5/8"	3/4"
	Glass Cut Out Dimensions*	8-9/16"	31"	-
WMD3036	Cabinet Dimension	30"	36"	12"
	Door Dimension	14-5/8"	35-5/8"	3/4"
	Glass Cut Out Dimensions*	9-15/16"	31"	-
WMD3336	Cabinet Dimension	33"	36"	12"
	Door Dimension	16-1/4"	35-5/8"	3/4"
	Glass Cut Out Dimensions*	11-9/16"	31"	-
WMD3636	Cabinet Dimension	36"	36"	12"
	Door Dimension	17-5/8"	35-5/8"	3/4"
	Glass Cut Out Dimensions*	12-15/16"	31"	-

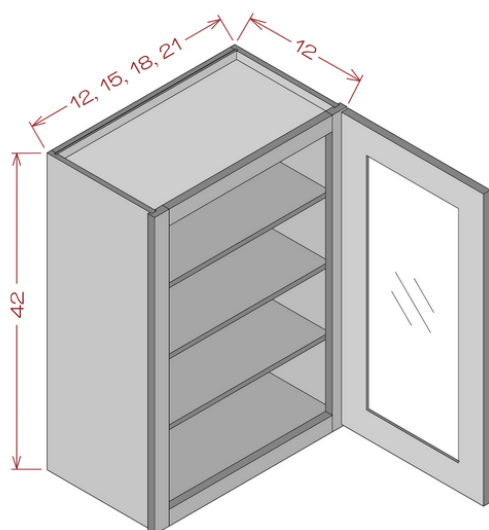
* - Specified Dimensions are for Thielsen/Modoc lines. For others check p. 18

42" Height Single Door Wall Cabinet



Model	Description	Width	Height	Depth
W0942	Cabinet Dimension	9"	42"	12"
	Door Dimension	8-3/4"	41-5/8"	3/4"
	Opening Dimension	5-7/8"	38-7/8"	3/4"
W1242	Cabinet Dimension	12"	42"	12"
	Door Dimension	11-3/4"	41-5/8"	3/4"
	Opening Dimension	8-7/8"	38-7/8"	3/4"
W1542	Cabinet Dimension	15"	42"	12"
	Door Dimension	14-3/4"	41-5/8"	3/4"
	Opening Dimension	11-7/8"	38-7/8"	3/4"
W1842	Cabinet Dimension	18"	42"	12"
	Door Dimension	17-3/4"	41-5/8"	3/4"
	Opening Dimension	14-7/8"	38-7/8"	3/4"
W2142	Cabinet Dimension	21"	42"	12"
	Door Dimension	20-3/4"	41-5/8"	3/4"
	Opening Dimension	17-7/8"	38-7/8"	3/4"

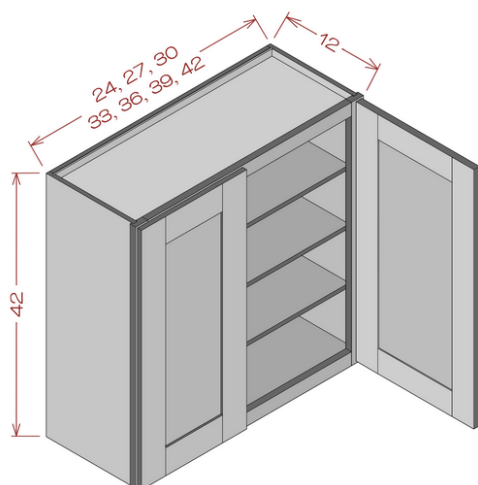
42" Height Single Glass Door Wall Cabinet



Model	Description	Width	Height	Depth
WMD1242	Cabinet Dimension	12"	42"	12"
	Door Dimension	11-3/4"	41-5/8"	3/4"
	Glass Cut Out Dimensions*	6-15/16"	36-8/9"	-
WMD1542	Cabinet Dimension	15"	42"	12"
	Door Dimension	14-3/4"	41-5/8"	3/4"
	Glass Cut Out Dimensions*	9-15/16"	36-8/9"	-
WMD1842	Cabinet Dimension	18"	42"	12"
	Door Dimension	17-3/4"	41-5/8"	3/4"
	Glass Cut Out Dimensions*	12-15/16"	36-8/9"	-
WMD2142	Cabinet Dimension	21"	42"	12"
	Door Dimension	20-3/4"	41-5/8"	3/4"
	Glass Cut Out Dimensions*	15-15/16"	36-8/9"	-

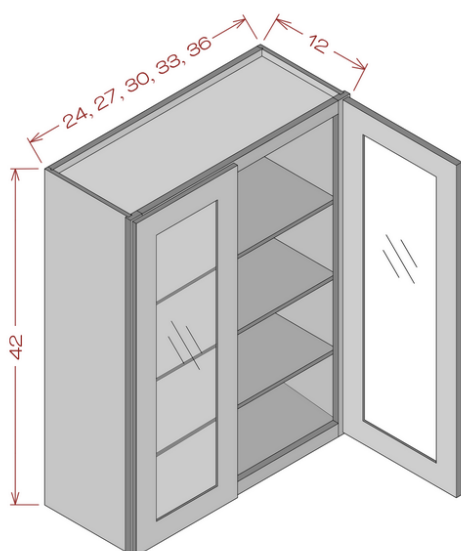
* - Specified Dimensions are for Thielsen/Modoc lines. For others check p. 18

42" Height Double Door Wall Cabinet



Model	Description	Width	Height	Depth
W2442	Cabinet Dimension	24"	42"	12"
	Door Dimension	11-3/4"	41-5/8"	3/4"
	Opening Dimension	20-7/8"	38-7/8"	3/4"
W2742	Cabinet Dimension	27"	42"	12"
	Door Dimension	13-1/4"	41-5/8"	3/4"
	Opening Dimension	23-7/8"	38-7/8"	3/4"
W3042	Cabinet Dimension	30"	42"	12"
	Door Dimension	14-5/8"	41-5/8"	3/4"
	Opening Dimension	26-7/8"	38-7/8"	3/4"
W3342	Cabinet Dimension	33"	42"	12"
	Door Dimension	16-1/4"	41-5/8"	3/4"
	Opening Dimension	29-7/8"	38-7/8"	3/4"
W3642	Cabinet Dimension	36"	42"	12"
	Door Dimension	17-5/8"	41-5/8"	3/4"
	Opening Dimension	32-7/8"	38-7/8"	3/4"
W3942	Cabinet Dimension	39"	42"	12"
	Door Dimension	19-1/4"	41-5/8"	3/4"
	Opening Dimension	35-7/8"	38-7/8"	3/4"
W4242	Cabinet Dimension	42"	42"	12"
	Door Dimension	20-5/8"	41-5/8"	3/4"
	Opening Dimension	38-7/8"	38-7/8"	3/4"

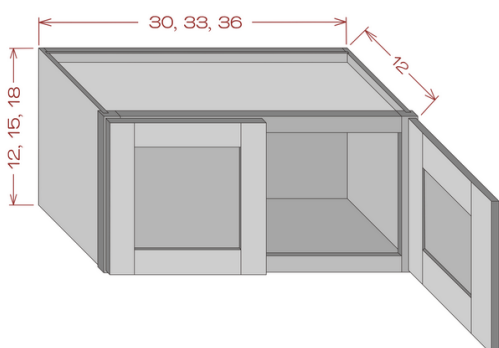
42" Height Double Glass Door Wall Cabinet



Model	Description	Width	Height	Depth
WMD2442	Cabinet Dimension	24"	42"	12"
	Door Dimension	11-3/4"	41-5/8"	3/4"
	Glass Cut Out Dimensions*	6-15/16"	36-8/9"	-
WMD2742	Cabinet Dimension	27"	42"	12"
	Door Dimension	8-9/16"	41-5/8"	3/4"
	Glass Cut Out Dimensions*	9-15/16"	36-8/9"	-
WMD3042	Cabinet Dimension	30"	42"	12"
	Door Dimension	14-5/8"	41-5/8"	3/4"
	Glass Cut Out Dimensions*	9-15/16"	36-8/9"	-
WMD3342	Cabinet Dimension	33"	42"	12"
	Door Dimension	16-1/4"	41-5/8"	3/4"
	Glass Cut Out Dimensions*	11-9/16"	36-8/9"	-
WMD3642	Cabinet Dimension	36"	42"	12"
	Door Dimension	17-5/8"	41-5/8"	3/4"
	Glass Cut Out Dimensions*	12-15/16"	36-8/9"	-

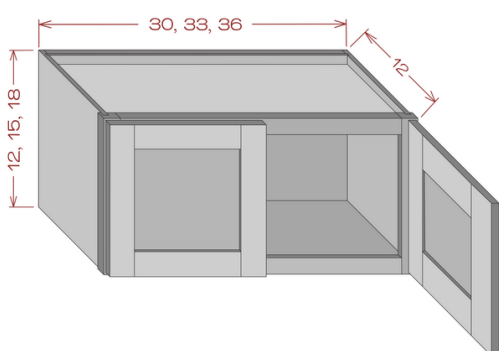
* - Specified Dimensions are for Thielsen/Modoc lines. For others check p. 18

12" Height Bridge Wall Cabinet



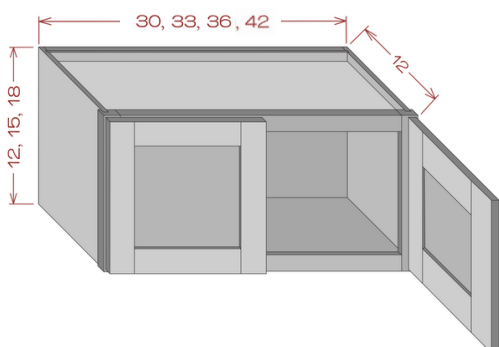
Model	Description	Width	Height	Depth
W3012	Cabinet Dimension	30"	12"	12"
	Door Dimension	14-5/8"	11-5/8"	3/4"
	Opening Dimension	26-7/8"	8-7/8"	3/4"
W3312	Cabinet Dimension	33"	12"	12"
	Door Dimension	16-1/4"	11-5/8"	3/4"
	Opening Dimension	29-7/8"	8-7/8"	3/4"
W3612	Cabinet Dimension	36"	12"	12"
	Door Dimension	17-5/8"	11-5/8"	3/4"
	Opening Dimension	32-7/8"	8-7/8"	3/4"

15" Height Bridge Wall Cabinet



Model	Description	Width	Height	Depth
W3015	Cabinet Dimension	30"	15"	12"
	Door Dimension	14-5/8"	14-5/8"	3/4"
	Opening Dimension	26-7/8"	11-7/8"	3/4"
W3315	Cabinet Dimension	33"	15"	12"
	Door Dimension	16-1/4"	14-5/8"	3/4"
	Opening Dimension	29-7/8"	11-7/8"	3/4"
W3615	Cabinet Dimension	36"	15"	12"
	Door Dimension	17-5/8"	14-5/8"	3/4"
	Opening Dimension	32-7/8"	11-7/8"	3/4"

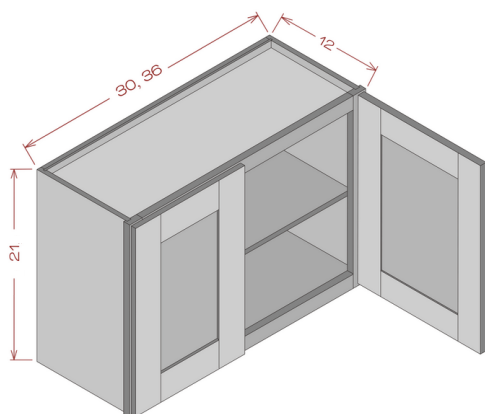
18" Height Bridge Wall Cabinet



Model	Description	Width	Height	Depth
W3018	Cabinet Dimension	30"	18"	12"
	Door Dimension	14-5/8"	17-5/8"	3/4"
	Opening Dimension	26-7/8"	14-7/8"	3/4"
W3318	Cabinet Dimension	33"	18"	12"
	Door Dimension	16-1/4"	17-5/8"	3/4"
	Opening Dimension	29-7/8"	14-7/8"	3/4"
W3618	Cabinet Dimension	36"	18"	12"
	Door Dimension	17-5/8"	17-5/8"	3/4"
	Opening Dimension	32-7/8"	14-7/8"	3/4"
W4218*	Cabinet Dimension	42"	18"	12"
	Door Dimension	20-5/8"	17-5/8"	3/4"
	Opening Dimension	38-7/8"	14-7/8"	3/4"

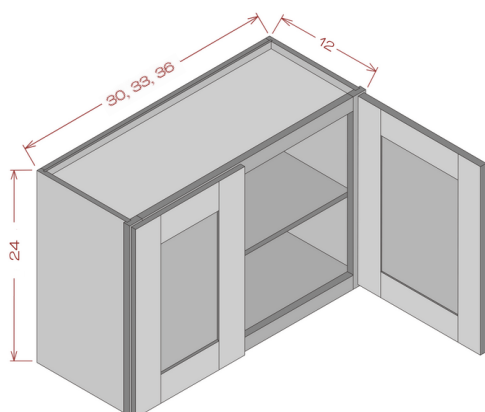
* - Not available for all styles.

21" Height Bridge Wall Cabinet



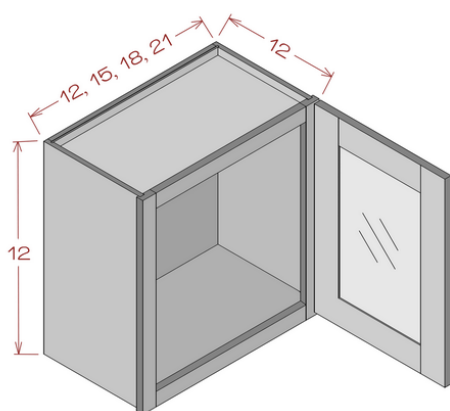
Model	Description	Width	Height	Depth
W3021	Cabinet Dimension	30"	21"	12"
	Door Dimension	14-5/8"	20-5/8"	3/4"
	Opening Dimension	26-7/8"	17-7/8"	3/4"
W3621	Cabinet Dimension	36"	21"	12"
	Door Dimension	17-5/8"	20-5/8"	3/4"
	Opening Dimension	32-7/8"	17-7/8"	3/4"

24" Height Bridge Wall Cabinet



Model	Description	Width	Height	Depth
W3024	Cabinet Dimension	30"	24"	12"
	Door Dimension	14-5/8"	23-5/8"	3/4"
	Opening Dimension	26-7/8"	20-7/8"	3/4"
W3324	Cabinet Dimension	33"	24"	12"
	Door Dimension	16-1/4"	23-5/8"	3/4"
	Opening Dimension	29-7/8"	20-7/8"	3/4"
W3624	Cabinet Dimension	36"	24"	12"
	Door Dimension	17-5/8"	23-5/8"	3/4"
	Opening Dimension	32-7/8"	20-7/8"	3/4"

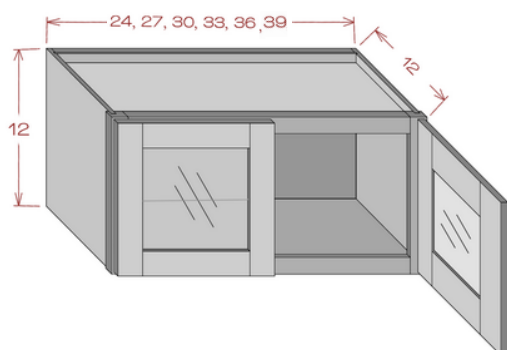
12" Height Single Glass Door Wall Cabinet*



Model	Description	Width	Height	Depth
WMD1212	Cabinet Dimension	12"	12"	12"
	Door Dimension	11-3/4"	11-5/8"	3/4"
	Glass Cut Out Dimensions	6-13/16"	6-13/16"	-
WMD1512	Cabinet Dimension	15"	12"	12"
	Door Dimension	14-5/8"	11-5/8"	3/4"
	Glass Cut Out Dimensions	9-13/16"	6-13/16"	-
WMD1812	Cabinet Dimension	18"	12"	12"
	Door Dimension	17-5/8"	11-3/4"	3/4"
	Glass Cut Out Dimensions	12-13/16"	6-13/16"	-
WMD2112	Cabinet Dimension	21"	12"	12"
	Door Dimension	17-5/8"	11-3/4"	3/4"
	Glass Cut Out Dimensions	15-13/16"	6-13/16"	-

* - Cabinets only available in TPW and TPG colors

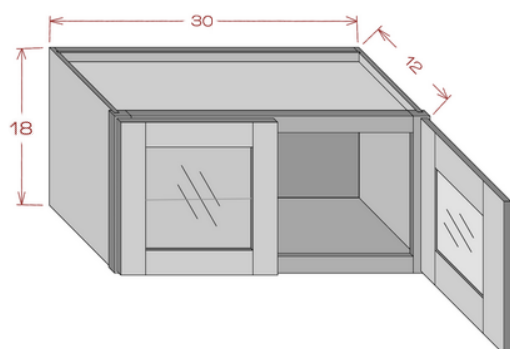
12" Height Double Glass Door Wall Cabinet*



Model	Description	Width	Height	Depth
WMD2412	Cabinet Dimension	24"	12"	12"
	Door Dimension	11-3/4"	11-5/8"	3/4"
	Glass Cut Out Dimensions	6-3/4"	6-5/8"	-
WMD2712	Cabinet Dimension	27"	12"	12"
	Door Dimension	13-1/4"	11-5/8"	3/4"
	Glass Cut Out Dimensions	8-1/4"	6-5/8"	-
WMD3012	Cabinet Dimension	30"	12"	12"
	Door Dimension	14-5/8"	11-5/8"	3/4"
	Glass Cut Out Dimensions	9-3/4"	6-5/8"	-
WMD3312	Cabinet Dimension	33"	12"	12"
	Door Dimension	16-1/4"	11-5/8"	3/4"
	Glass Cut Out Dimensions	11-3/8"	6-5/8"	-
WMD3612	Cabinet Dimension	36"	12"	12"
	Door Dimension	17-5/8"	11-5/8"	3/4"
	Glass Cut Out Dimensions	12-3/4"	6-5/8"	-
WMD3912	Cabinet Dimension	39"	12"	12"
	Door Dimension	19-1/4"	11-5/8"	3/4"
	Glass Cut Out Dimensions	14-1/2"	6-5/8"	-

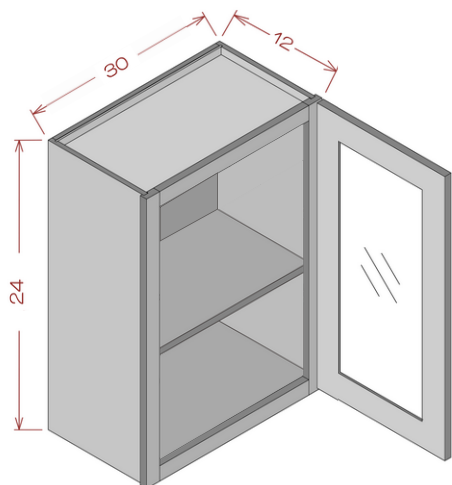
* - Cabinets only available in TPW and TPG colors

18" Height Double Glass Door Wall Cabinet*



Model	Description	Width	Height	Depth
WMD3018	Cabinet Dimension	30"	18"	12"
	Door Dimension	14-5/8"	17-5/8"	3/4"
	Glass Cut Out Dimensions	9-3/4"	12-7/8"	-

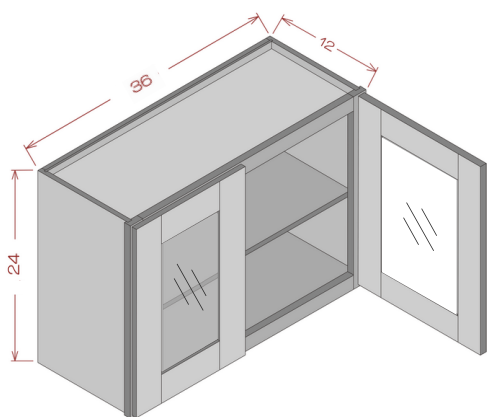
24" Height Single Glass Door Wall Cabinet



Model	Description	Width	Height	Depth
WMD3024	Cabinet Dimension	30"	24"	12"
	Door Dimension	29-1/2"	23-5/8"	3/4"
	Glass Cut Out Dimensions*	24-13/16"	18-13/16"	-

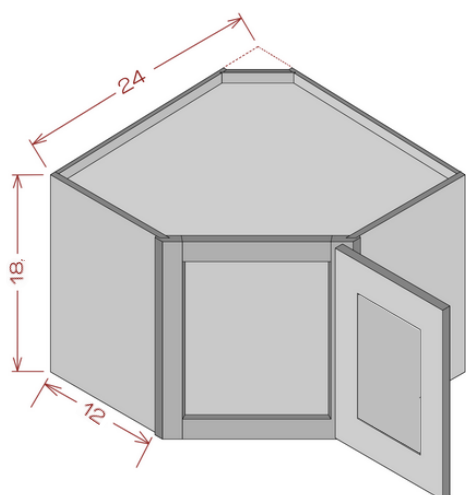
* - Specified Dimensions are for Thielsen/Modoc lines. For others check p. 24

24" Height Double Glass Door Wall Cabinet



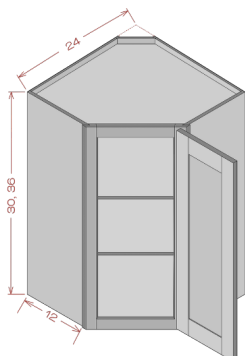
Model	Description	Width	Height	Depth
WMD3624	Cabinet Dimension	36"	24"	12"
	Door Dimension	17-5/8"	23-5/8"	3/4"
	Glass Cut Out Dimensions*	12-7/8"	18-7/8"	-

Diagonal Corner Wall Cabinet



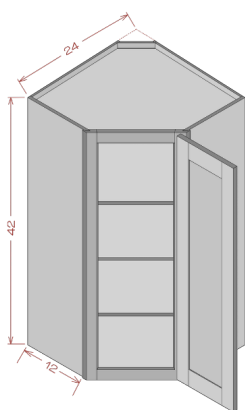
Model	Description	Width	Height	Depth
WDC2418	Cabinet Dimension	24"	18"	12"
	Door Dimension	15-1/8"	17-5/8"	3/4"

Diagonal Corner Wall Cabinet



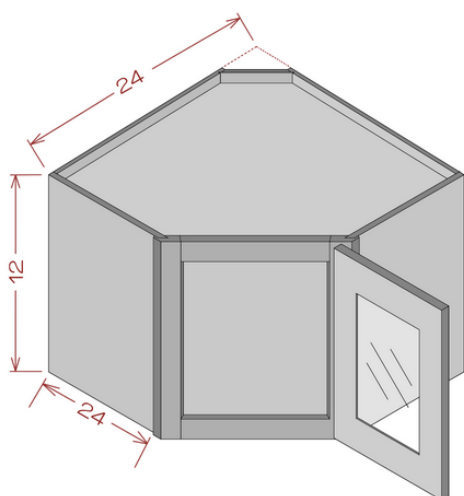
Model	Description	Width	Height	Depth
WDC2430	Cabinet Dimension	24"	30"	12"
	Door Dimension	15-1/8"	29-5/8"	3/4"

WDC2436	Cabinet Dimension	24"	36"	12"
	Door Dimension	15-1/8"	35-5/8"	3/4"



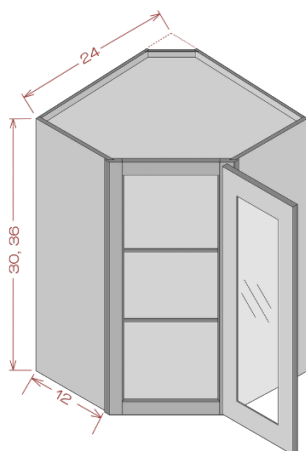
WDC2442	Cabinet Dimension	24"	42"	12"
	Door Dimension	15-1/8"	41-5/8"	3/4"

Wall Diagonal Glass Door Cabinet



Model	Description	Width	Height	Depth
WDCMD2412	Cabinet Dimension	24"	12"	12"
	Door Dimension	15"	11-5/8"	3/4"
	Glass Cut Out Dimensions	10-1/4"	6-5/8"	-

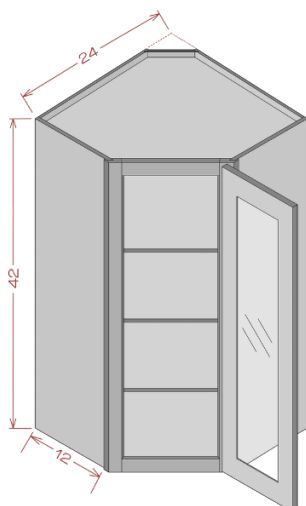
Wall Diagonal Glass Door Cabinet



Model	Description	Width	Height	Depth
WDCMD2430	Cabinet Dimension	24"	30"	12"
	Door Dimension	15"	29-5/8"	3/4"
	Glass Cut Out Dimensions*	10-3/8"	24-7/8"	-

WDCMD2436	Cabinet Dimension	24"	36"	12"
	Door Dimension	15"	35-5/8"	3/4"
	Glass Cut Out Dimensions*	10-3/8"	31"	-

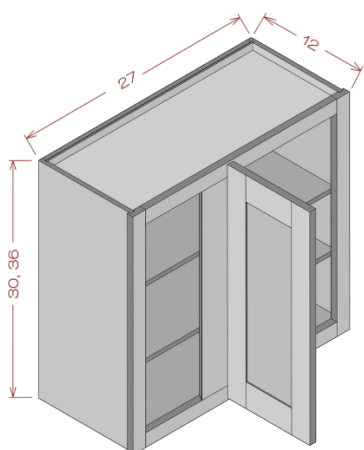
* - Specified Dimensions are for Thielsen/Modoc lines. For others check p. 18



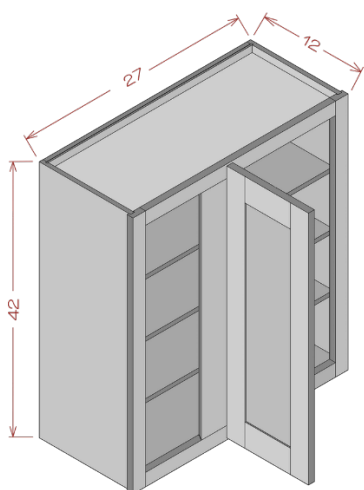
WDCMD2442	Cabinet Dimension	24"	42"	12"
	Door Dimension	15"	41-5/8"	3/4"
	Glass Cut Out Dimensions*	10-3/8"	36-8/9"	-

* - Specified Dimensions are for Thielsen/Modoc lines. For others check p. 18

Blind Corner Wall Cabinet with Shelves

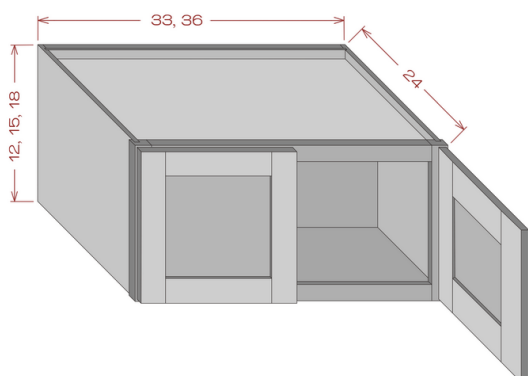


Model	Description	Width	Height	Depth
WBC2730	Cabinet Dimension	27"	30"	12"
	Door Dimension	11-3/4"	29-5/8"	3/4"
WBC2736	Cabinet Dimension	27"	36"	12"
	Door Dimension	11-3/4"	35-5/8"	3/4"



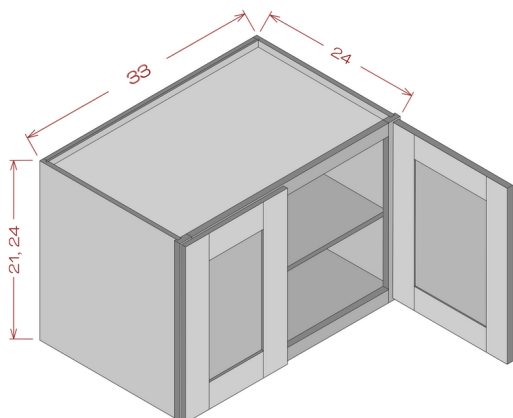
WBC2742	Cabinet Dimension	27"	42"	12"
	Door Dimension	11-3/4"	41-5/8"	3/4"

33" Wide Refrigerator Wall Cabinet



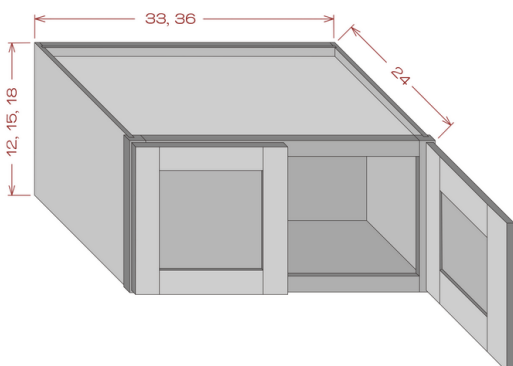
Model	Description	Width	Height	Depth
W331224	Cabinet Dimension	33"	12"	24"
	Door Dimension	16-1/4"	11-5/8"	3/4"
	Opening Dimension	26-7/8"	8-7/8"	3/4"
W331824	Cabinet Dimension	33"	18"	24"
	Door Dimension	16-1/4"	17-5/8"	3/4"
	Opening Dimension	26-7/8"	14-7/8"	3/4"

33" Wide Refrigerator Wall Cabinet



Model	Description	Width	Height	Depth
W332424	Cabinet Dimension	33"	24"	24"
	Door Dimension	16-1/4"	23-5/8"	3/4"
	Opening Dimension	26-7/8"	20-7/8"	3/4"

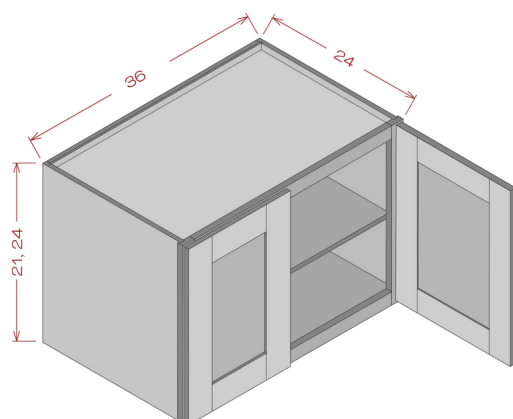
36" Wide Refrigerator Wall Cabinet



Model	Description	Width	Height	Depth
W361224	Cabinet Dimension	36"	12"	24"
	Door Dimension	17-5/8"	11-5/8"	3/4"
	Opening Dimension	32-7/8"	8-7/8"	3/4"

W361524	Cabinet Dimension	36"	15"	24"
	Door Dimension	17-5/8"	14-5/8"	3/4"
	Opening Dimension	32-7/8"	11-7/8"	-

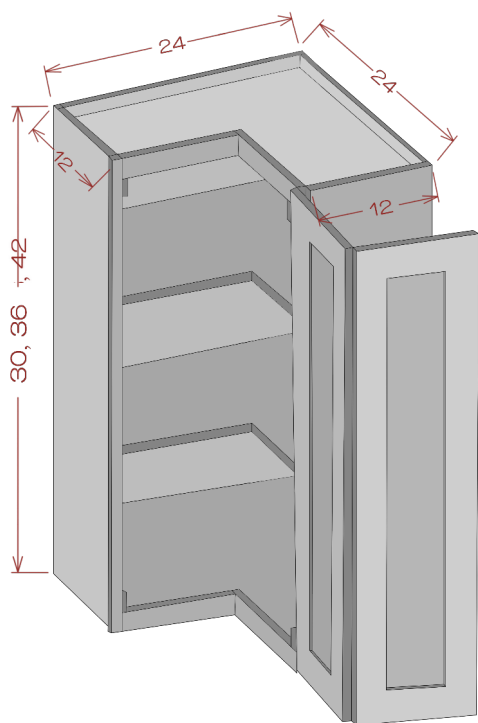
W361824	Cabinet Dimension	36"	18"	24"
	Door Dimension	17-5/8"	17-5/8"	3/4"
	Opening Dimension	32-7/8"	14-7/8"	-



W362124	Cabinet Dimension	36"	21"	24"
	Door Dimension	17-5/8"	20-5/8"	3/4"
	Opening Dimension	32-7/8"	17-7/8"	3/4"

W362424	Cabinet Dimension	36"	24"	24"
	Door Dimension	17-5/8"	23-5/8"	3/4"
	Opening Dimension	32-7/8"	20-7/8"	3/4"

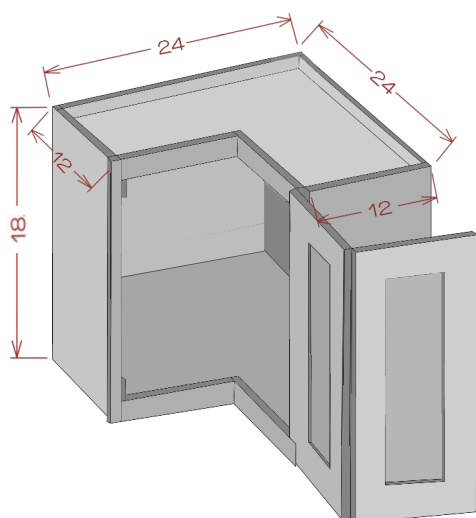
Easy Reach Wall Cabinet*



Model	Description	Width	Height	Depth
WER2430	Cabinet Dimension	24"	30"	12"
	Door Dimension	10"	29-5/8"	3/4"
WER2436	Cabinet Dimension	24"	36"	12"
	Door Dimension	10"	35-5/8"	3/4"
WER2442	Cabinet Dimension	24"	42"	12"
	Door Dimension	10"	41-5/8"	3/4"

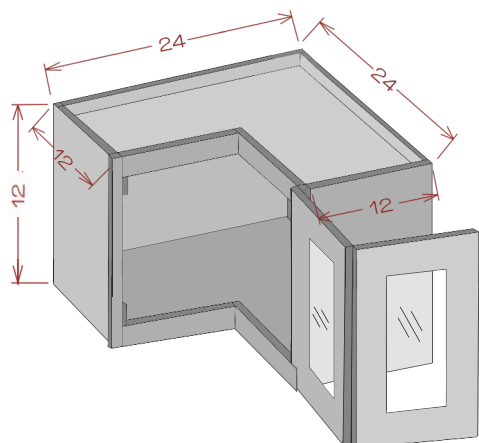
* - WER2442 has 3 shelves

Easy Reach Wall Cabinet



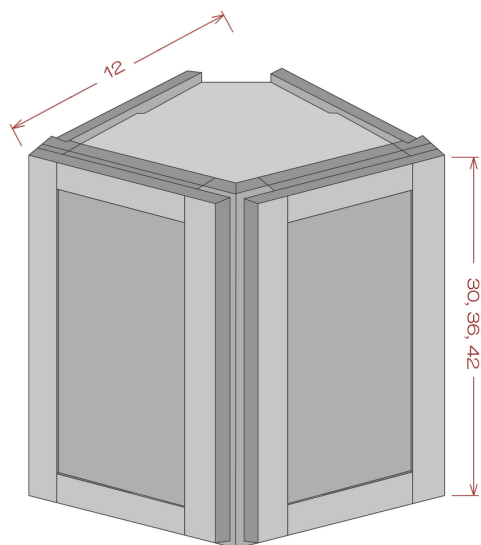
Model	Description	Width	Height	Depth
WER2418	Cabinet Dimension	24"	18"	12"
	Door Dimension	10"	17-5/8"	3/4"

Easy Reach Wall Cabinet with Glass Door*



Model	Description	Width	Height	Depth
WERMD2412	Cabinet Dimension	24"	12"	12"
	Door Dimension	10"	11-5/8"	3/4"
	Glass Cut Out Dimensions	5-1/4"	6-7/8"	-

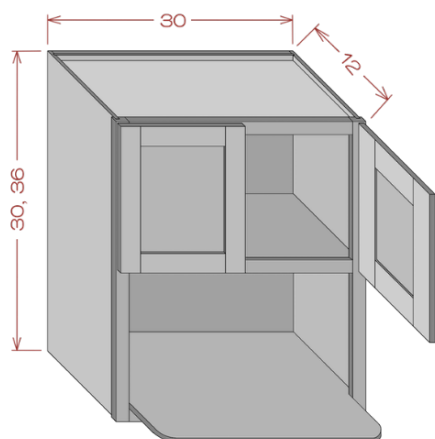
Wall End Corner Triangle Cabinet*



Model	Description	Width	Height	Depth
WEC1230	Cabinet Dimension	12"	30"	12"
	Door Dimension	8-3/4"	29-5/8"	3/4"
WEC1236	Cabinet Dimension	12"	36"	12"
	Door Dimension	8-3/4"	35-5/8"	3/4"
WEC1242	Cabinet Dimension	12"	42"	12"
	Door Dimension	8-3/4"	41-5/8"	3/4"

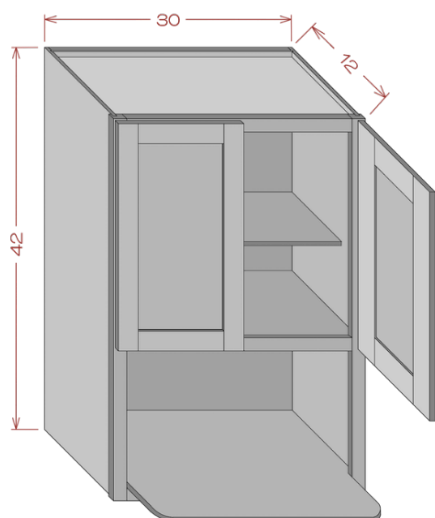
* - WEC1230, WEC1236 have 2 shelves; WER2442 has 3 shelves

Single Door Single Drawer Base



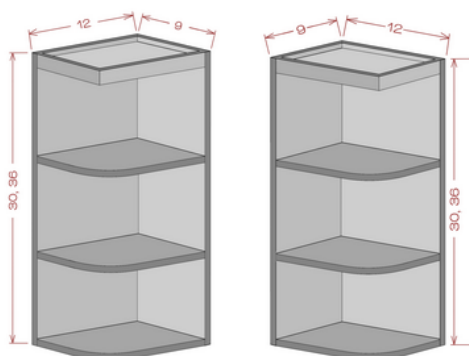
Model	Description	Width	Height	Depth
WM3030	Cabinet Dimension	30"	30"	12"
	Door Dimension	14-5/8"	11-5/8"	3/4"
	Installed Shelf Dimension	28-3/8"	17-1/8"	3/4"
	The Opening Dimension	26-7/8"	16-3/8"	-

WM3036	Cabinet Dimension	30"	36"	12"
	Door Dimension	14-5/8"	17-5/8"	3/4"
	Installed Shelf Dimension	28-3/8"	17-1/8"	3/4"
	The Opening Dimension	26-7/8"	16-3/8"	-



WM3042	Cabinet Dimension	30"	42"	12"
	Door Dimension	14-5/8"	23-5/8"	3/4"
	Installed Shelf Dimension	28-3/8"	17-1/8"	3/4"
	The Opening Dimension	26-7/8"	16-3/8"	-

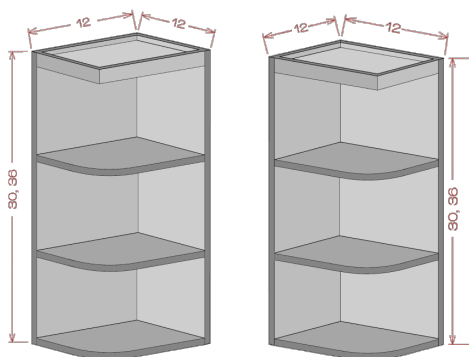
30" High Wall End Shelf



Model	Description	Width	Height	Depth
WES0930L	Cabinet Dimension	9"	30"	12"

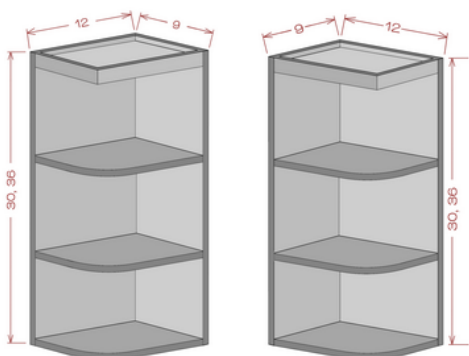
WES0930R	Cabinet Dimension	9"	30"	12"
----------	-------------------	----	-----	-----

30" High Wall End Shelf

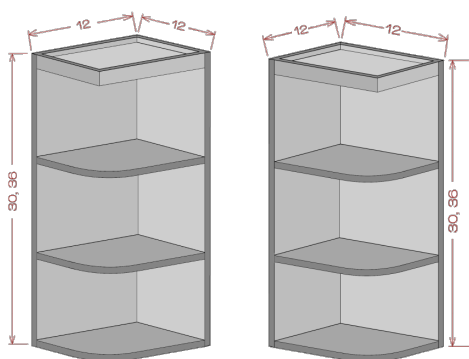


Model	Description	Width	Height	Depth
WES1230L	Cabinet Dimension	12"	30"	12"
WES1230R	Cabinet Dimension	12"	30"	12"

36" High Wall End Shelf

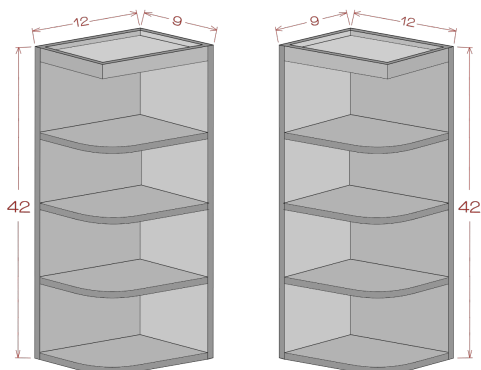


Model	Description	Width	Height	Depth
WES0936L	Cabinet Dimension	9"	36"	12"
WES0936R	Cabinet Dimension	9"	36"	12"

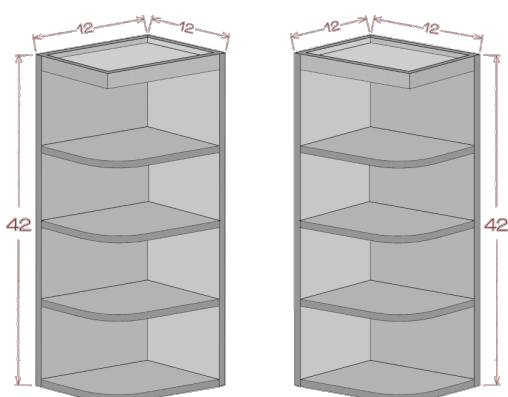


WES1236L	Cabinet Dimension	12"	36"	12"
WES1236R	Cabinet Dimension	12"	36"	12"

42" High Wall End Shelf

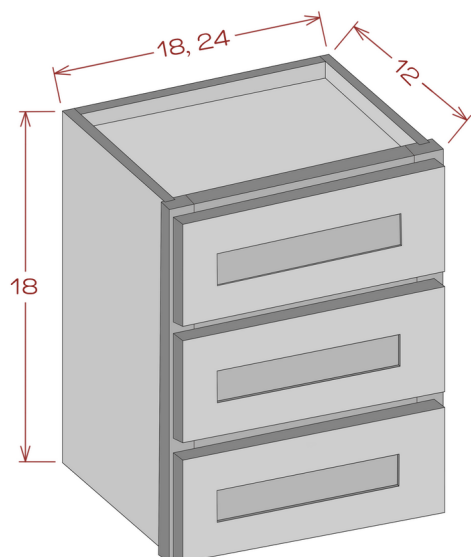


Model	Description	Width	Height	Depth
WES0942L	Cabinet Dimension	9"	42"	12"
WES0942R	Cabinet Dimension	9"	42"	12"



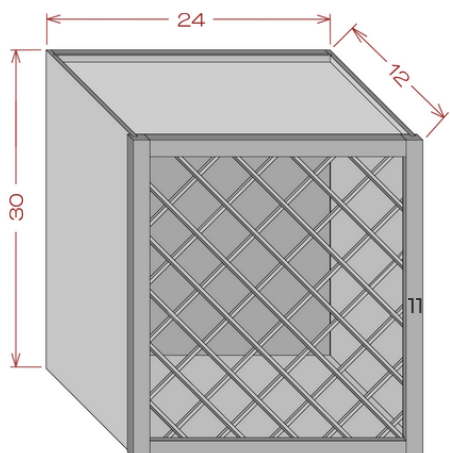
WES1242L	Cabinet Dimension	12"	42"	12"
WES1242R	Cabinet Dimension	12"	42"	12"

Wall Drawer Cabinet



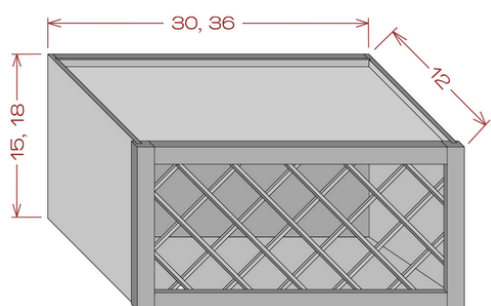
Model	Description	Width	Height	Depth
W3D18	Cabinet Dimension	18"	18"	12"
	Drawer Front	17-5/8"	5-3/4"	3/4"
	Drawer Box	12-1/2"	1-1/2"	8-1/2"
W3D24	Cabinet Dimension	24"	18"	12"
	Drawer Front	23-5/8"	5-3/4"	3/4"
	Drawer Box	18-1/2"	1-1/2"	8-1/2"

24" Wide Wine Rack Cabinets



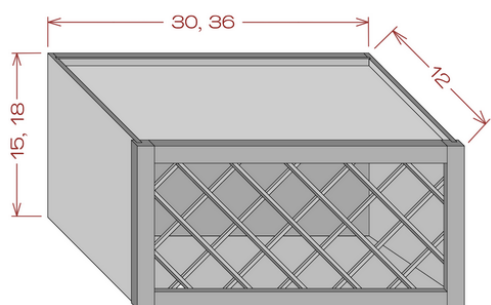
Model	Description	Width	Height	Depth
WRC2430	Cabinet Dimension	24"	30"	12"
	Slots Capacity	18		

30" Wide Wine Rack Cabinets



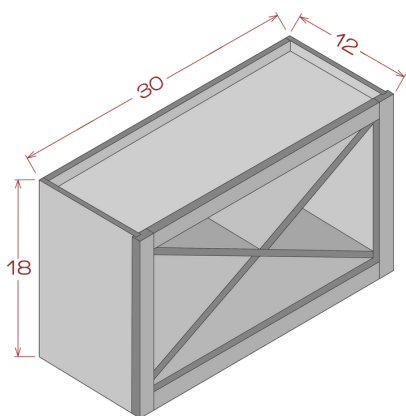
Model	Description	Width	Height	Depth
WRC3015	Cabinet Dimension	15"	30"	12"
	Slots Capacity	11		
WRC3018	Cabinet Dimension	18"	30"	12"
	Slots Capacity	11		

36" Wide Wine Rack Cabinets



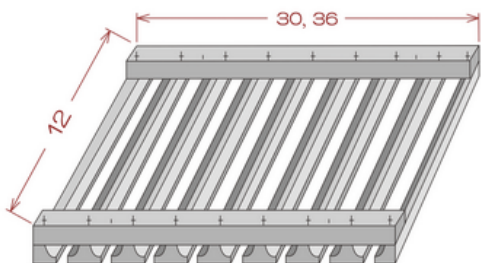
Model	Description	Width	Height	Depth
WRC3615	Cabinet Dimension	15"	36"	12"
	Slots Capacity	13		
WRC3618	Cabinet Dimension	18"	36"	12"
	Slots Capacity	13		

Wall X Wine Rack Cabinets



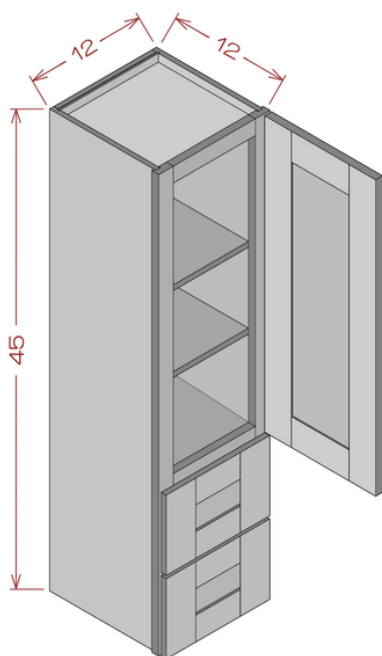
Model	Description	Width	Height	Depth
WRX3618	Cabinet Dimension	30"	18"	12"

Stem Glass Holder



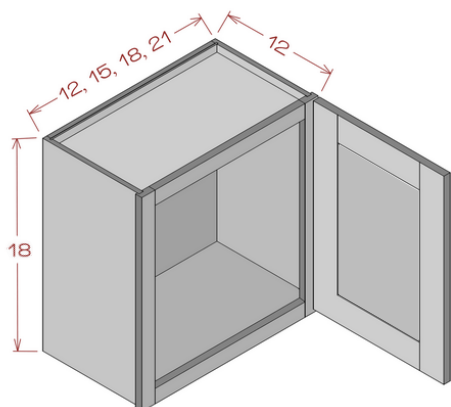
Model	Description	Width	Height	Depth
SGH30	Cabinet Dimension	30"	1-5/8"	12"
SGH36	Cabinet Dimension	36"	1-5/8"	12"

Linen Cabinet



Model	Description	Width	Height	Depth
LC12	Cabinet Dimension	12"	45"	12"
	Door Dimension	11-3/4"	30-3/8"	3/4"
	Drawer Front	11-3/4"	6-7/8"	3/4"
	Drawer Box	6-1/2"	3-1/4"	8-1/2"

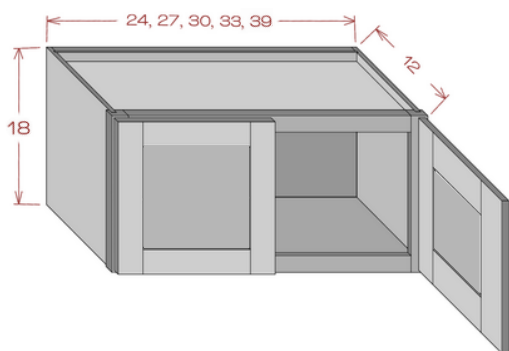
18" Height Single Door Wall Cabinet*



Model	Description	Width	Height	Depth
W1218	Cabinet Dimension	12"	18"	12"
	Door Dimension	11-5/8"	17-5/8"	3/4"
	Opening Dimension	8-7/8"	14-7/8"	3/4"
W1518	Cabinet Dimension	15"	18"	12"
	Door Dimension	14-5/8"	17-5/8"	3/4"
	Opening Dimension	11-7/8"	14-7/8"	3/4"
W1818	Cabinet Dimension	18"	18"	12"
	Door Dimension	17-5/8"	17-5/8"	3/4"
	Opening Dimension	14-7/8"	14-7/8"	3/4"
W2118	Cabinet Dimension	21"	18"	12"
	Door Dimension	20-5/8"	17-5/8"	3/4"
	Opening Dimension	17-7/8"	14-7/8"	3/4"

* - Cabinets only available in TPU, TPG, TPW

18" Height Double Door Wall Cabinet*

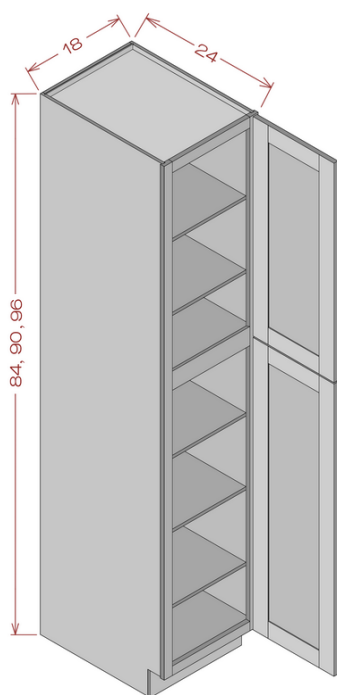


Model	Description	Width	Height	Depth
W2418	Cabinet Dimension	24"	18"	12"
	Door Dimension	11-3/4"	17-5/8"	3/4"
	Opening Dimension	20-7/8"	14-7/8"	-
W2718	Cabinet Dimension	27"	18"	12"
	Door Dimension	13-1/4"	17-5/8"	3/4"
	Opening Dimension	23-7/8"	14-7/8"	-
W3018	Cabinet Dimension	30"	18"	12"
	Door Dimension	14-5/8"	17-5/8"	3/4"
	Opening Dimension	26-7/8"	14-7/8"	-
W3318	Cabinet Dimension	33"	18"	12"
	Door Dimension	16-1/4"	17-5/8"	3/4"
	Opening Dimension	29-7/8"	14-7/8"	-
W3618	Cabinet Dimension	36"	18"	12"
	Door Dimension	17-5/8"	17-5/8"	3/4"
	Opening Dimension	32-7/8"	14-7/8"	-
W3918	Cabinet Dimension	39"	18"	12"
	Door Dimension	19-1/4"	17-5/8"	3/4"
	Opening Dimension	35-7/8"	14-7/8"	-

* - Cabinets only available in TPU, TPG, TPW

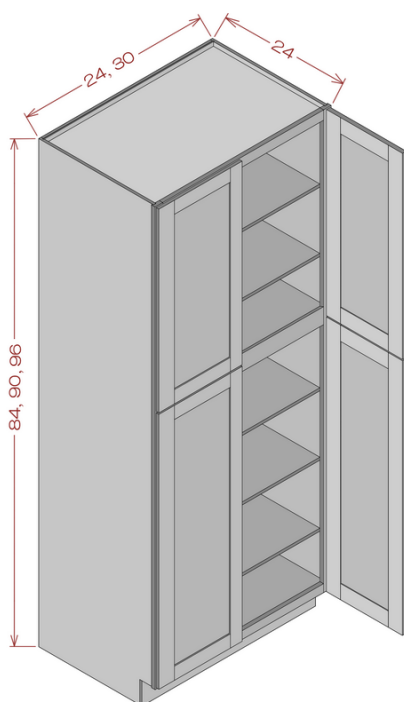
OVEN AND PANTRY CABINETS

18" Wide Utility Cabinets



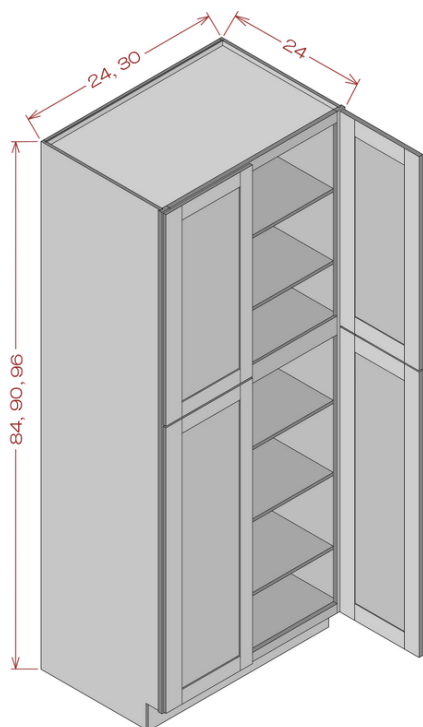
Model	Description	Width	Height	Depth
PC1884	Cabinet Dimension	18"	84"	24"
	Top Door Dimension	17-5/8"	29-5/8"	3/4"
	Bottom Door Dimension	17-5/8"	49-1/4"	3/4"
PC1890	Cabinet Dimension	18"	90"	24"
	Top Door Dimension	17-5/8"	35-5/8"	3/4"
	Bottom Door Dimension	17-5/8"	49-1/4"	3/4"
PC1896	Cabinet Dimension	18"	96"	24"
	Top Door Dimension	17-5/8"	41-5/8"	3/4"
	Bottom Door Dimension	17-5/8"	49-1/4"	3/4"

24" Wide Utility Cabinets



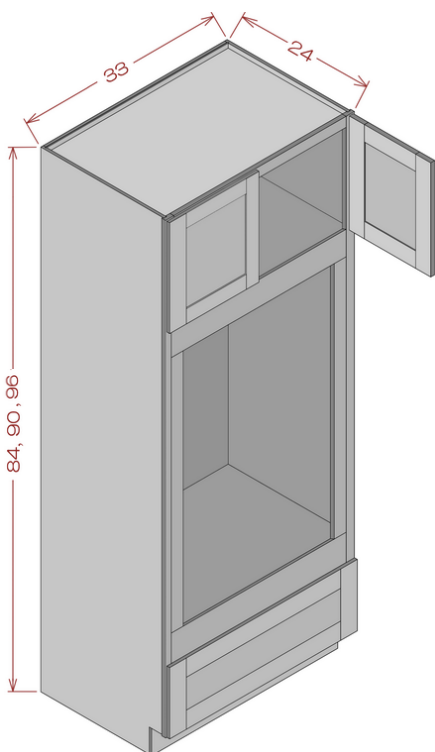
Model	Description	Width	Height	Depth
PC2484	Cabinet Dimension	24"	84"	24"
	Top Door Dimension	11-3/4"	29-5/8"	3/4"
	Bottom Door Dimension	11-3/4"	49-1/4"	3/4"
PC2490	Cabinet Dimension	24"	90"	24"
	Top Door Dimension	11-3/4"	35-5/8"	3/4"
	Bottom Door Dimension	11-3/4"	49-1/4"	3/4"
PC2496	Cabinet Dimension	24"	96"	24"
	Top Door Dimension	11-3/4"	41-5/8"	3/4"
	Bottom Door Dimension	11-3/4"	49-1/4"	3/4"

30" Wide Utility Cabinets



Model	Description	Width	Height	Depth
PC3084	Cabinet Dimension	30"	84"	24"
	Top Door Dimension	14-5/8"	29-5/8"	3/4"
	Bottom Door Dimension	14-5/8"	49-1/4"	3/4"
PC3090	Cabinet Dimension	30"	90"	24"
	Top Door Dimension	14-5/8"	35-5/8"	3/4"
	Bottom Door Dimension	14-5/8"	49-1/4"	3/4"
PC3096	Cabinet Dimension	30"	96"	24"
	Top Door Dimension	14-5/8"	41-5/8"	3/4"
	Bottom Door Dimension	14-5/8"	49-1/4"	3/4"

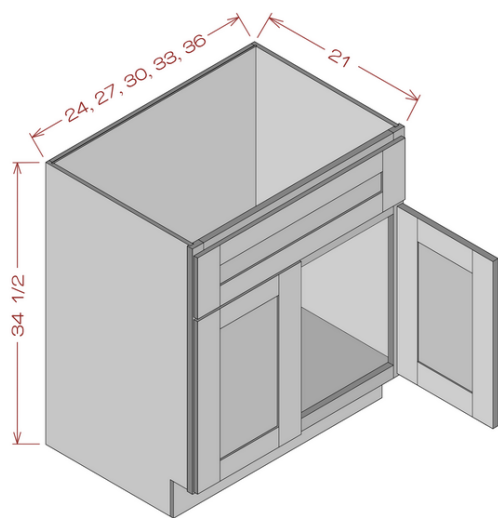
Oven Cabinets



Model	Description	Width	Height	Depth
OC3384	Cabinet Dimension	33"	84"	24"
	Top Door Dimension	16-1/4"	11-5/8"	3/4"
	Bottom Drawer Front	32-5/8"	10-7/8"	3/4"
	Bottom Drawer Box	28"	6-1/4"	19-5/8"
	The Opening Dimension	29-7/8"	48-1/2"	
OC3390	Cabinet Dimension	33"	90"	24"
	Top Door Dimension	16-1/4"	17-5/8"	3/4"
	Bottom Drawer Front	32-5/8"	10-7/8"	3/4"
	Bottom Drawer Box	28"	6-1/4"	19-5/8"
	The Opening Dimension	29-7/8"	48-1/2"	
OC3396	Cabinet Dimension	33"	96"	24"
	Top Door Dimension	16-1/4"	23-5/8"	3/4"
	Bottom Drawer Front	32-5/8"	10-7/8"	3/4"
	Bottom Drawer Box	28"	6-1/4"	19-5/8"
	The Opening Dimension	29-7/8"	48-1/2"	

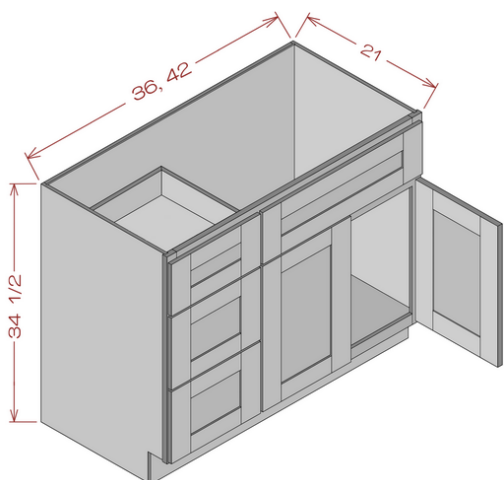
BATHROOM VANITIES

Vanity Sink Base



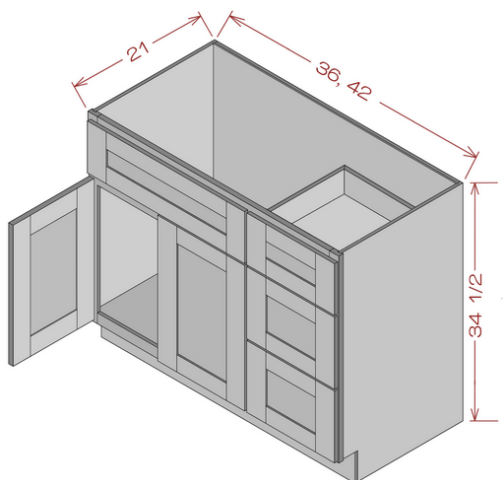
Model	Description	Width	Height	Depth
VSB24	Cabinet Dimension	24"	34-1/2"	21"
	Door Dimension	11-3/4"	21-7/8"	3/4"
	Drawer Front	23-1/2"	6-7/8"	3/4"
VSB27	Cabinet Dimension	27"	34-1/2"	21"
	Door Dimension	13-1/4"	21-7/8"	3/4"
	Drawer Front	26-5/8"	6-7/8"	3/4"
VSB30	Cabinet Dimension	30"	34-1/2"	21"
	Door Dimension	14-5/8"	21-7/8"	3/4"
	Drawer Front	29-1/2"	6-7/8"	3/4"
VSB33	Cabinet Dimension	33"	34-1/2"	21"
	Door Dimension	16-1/4"	21-7/8"	3/4"
	Drawer Front	32-5/8"	6-7/8"	3/4"
VSB36	Cabinet Dimension	36"	34-1/2"	21"
	Door Dimension	17-5/8"	21-7/8"	3/4"
	Drawer Front	35-1/2"	6-7/8"	3/4"

Vanity Sink Drawer-3 Drawers on Left



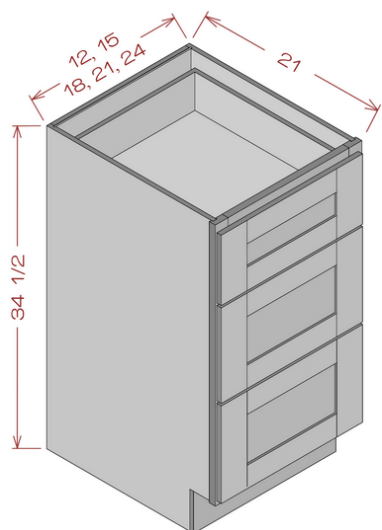
Model	Description	Width	Height	Depth
VA36DL-3	Cabinet Dimension	36"	34-1/2"	21"
	Door Dimension	11-7/8"	21-7/8"	3/4"
	Top Short Drawer Front	11-1/4"	6-7/8"	3/4"
	Top Long Drawer Front	23-7/8"	6-7/8"	3/4"
	Bottom Drawer Front	11-1/4"	10-7/8"	3/4"
	Top Short Drawer Box	7"	3-1/4"	16-5/8"
	Bottom Drawer Box	7"	6-1/4"	16-5/8"
VA42DL-3	Cabinet Dimension	42"	34-1/2"	21"
	Door Dimension	14-7/8"	21-7/8"	3/4"
	Top Short Drawer Front	11-1/4"	6-7/8"	3/4"
	Top Long Drawer Front	29-7/8"	6-7/8"	3/4"
	Bottom Drawer Front	11-1/4"	10-7/8"	3/4"
	Top Short Drawer Box	7"	3-1/4"	16-5/8"
	Bottom Drawer Box	7"	6-1/4"	16-5/8"

Vanity Sink Drawer-3 Drawers on Right



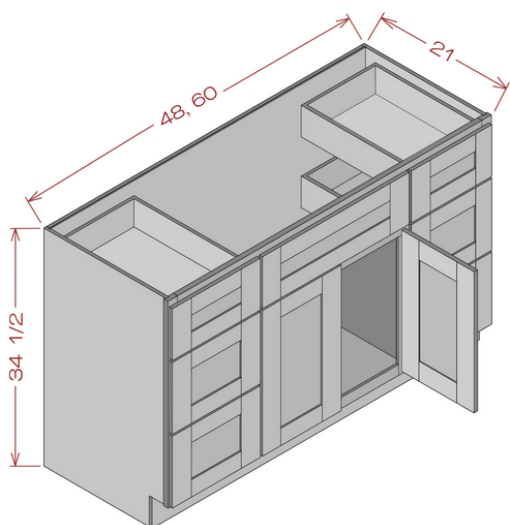
Model	Description	Width	Height	Depth
VA36DR-3	Cabinet Dimension	36"	34-1/2"	21"
	Door Dimension	11-7/8"	21-7/8"	3/4"
	Top Short Drawer Front	11-1/4"	6-7/8"	3/4"
	Top Long Drawer Front	23-7/8"	6-7/8"	3/4"
	Bottom Drawer Front	11-1/4"	10-7/8"	3/4"
	Top Short Drawer Box	7"	3-1/4"	16-5/8"
	Bottom Drawer Box	7"	6-1/4"	16-5/8"
VA42DR-3	Cabinet Dimension	42"	34-1/2"	21"
	Door Dimension	14-7/8"	21-7/8"	3/4"
	Top Short Drawer Front	11-1/4"	6-7/8"	3/4"
	Top Long Drawer Front	29-7/8"	6-7/8"	3/4"
	Bottom Drawer Front	11-1/4"	10-7/8"	3/4"
	Top Short Drawer Box	7"	3-1/4"	16-5/8"
	Bottom Drawer Box	7"	6-1/4"	16-5/8"

Vanity Base Drawers



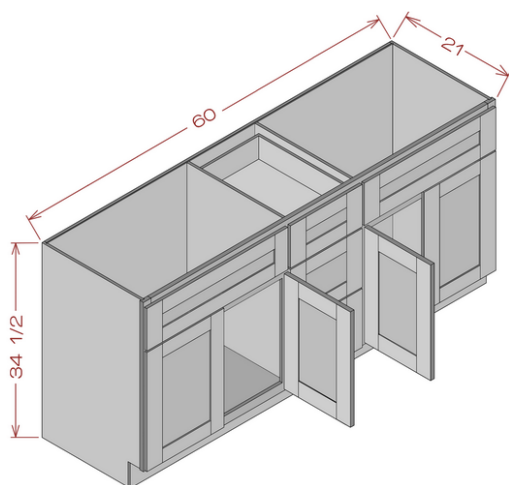
Model	Description	Width	Height	Depth
VD12-3	Cabinet Dimension	12"	34-1/2"	21"
	Top Drawer Front	11-3/4"	6-7/8"	3/4"
	Bottom Drawer Front	11-3/4"	10-7/8"	3/4"
	Top Drawer Box	7"	3-1/4"	16-5/8"
	Bottom Drawer Box	7"	6-1/4"	16-5/8"
VD15-3	Cabinet Dimension	15"	34-1/2"	21"
	Top Drawer Front	14-5/8"	6-7/8"	3/4"
	Bottom Drawer Front	14-5/8"	10-7/8"	3/4"
	Top Drawer Box	10"	3-1/4"	16-5/8"
	Bottom Drawer Box	10"	6-1/4"	16-5/8"
VD18-3	Cabinet Dimension	18"	34-1/2"	21"
	Top Drawer Front	17-5/8"	6-7/8"	3/4"
	Bottom Drawer Front	17-5/8"	10-7/8"	3/4"
	Top Drawer Box	13"	3-1/4"	16-5/8"
	Bottom Drawer Box	13"	6-1/4"	16-5/8"
VD21-3	Cabinet Dimension	21"	34-1/2"	21"
	Top Drawer Front	20-5/8"	6-7/8"	3/4"
	Bottom Drawer Front	20-5/8"	10-7/8"	3/4"
	Top Drawer Box	16"	3-1/4"	16-5/8"
	Bottom Drawer Box	16"	6-1/4"	16-5/8"
VD24-3	Cabinet Dimension	24"	34-1/2"	21"
	Top Drawer Front	23-1/2"	6-7/8"	3/4"
	Bottom Drawer Front	23-1/2"	10-7/8"	3/4"
	Top Drawer Box	19"	3-1/4"	16-5/8"
	Bottom Drawer Box	19"	6-1/4"	16-5/8"

Single Sink Vanity Combo Cabinet



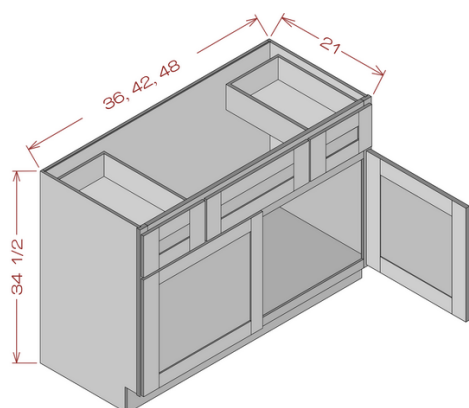
Model	Description	Width	Height	Depth
VDD48	Cabinet Dimension	48"	34-1/2"	21"
	Door Dimension	12-1/4"	21-7/8"	3/4"
	Top Short Drawer Front	11-1/4"	6-7/8"	3/4"
	Top Long Drawer Front	24-1/2"	6-7/8"	3/4"
	Bottom Drawer Front	11-1/4"	10-7/8"	3/4"
	Top Short Drawer Box	7"	3-1/4"	16-5/8"
	Bottom Drawer Box	7"	6-1/4"	16-5/8"
VDD60	Cabinet Dimension	60"	34-1/2"	21"
	Door Dimension	12-1/4"	21-7/8"	3/4"
	Top Short Drawer Front	11-1/4"	6-7/8"	3/4"
	Top Long Drawer Front	36-1/2"	6-7/8"	3/4"
	Bottom Drawer Front	11-1/4"	10-7/8"	3/4"
	Top Short Drawer Box	7"	3-1/4"	16-5/8"
	Bottom Drawer Box	7"	6-1/4"	16-5/8"

Double Sink Vanity Combo Cabinet



Model	Description	Width	Height	Depth
VCD60	Cabinet Dimension	60"	34-1/2"	21"
	Door Dimension	11-7/8"	21-7/8"	3/4"
	Top Short Drawer Front	11-1/4"	6-7/8"	3/4"
	Top Long Drawer Front	23-7/8"	6-7/8"	3/4"
	Bottom Drawer Front	11-1/4"	10-7/8"	3/4"
	Top Short Drawer Box	7-1/2"	3-1/4"	16-5/8"
	Bottom Drawer Box	7-1/2"	6-1/4"	16-5/8"

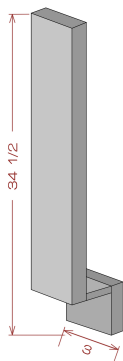
Vanity Combination Cabinet



Model	Description	Width	Height	Depth
VSD36	Cabinet Dimension	36"	34-1/2"	21"
	Door Dimension	17-5/8"	21-7/8"	3/4"
	Long Drawer Front	17-5/8"	6-7/8"	3/4"
	Drawer Front	8-6/8"	6-7/8"	3/4"
	Drawer Box	5-1/4"	3-1/4"	16-5/8"
VSD42	Cabinet Dimension	42"	34-1/2"	21"
	Door Dimension	20-5/8"	21-7/8"	3/4"
	Long Drawer Front	17-5/8"	6-7/8"	3/4"
	Drawer Front	11-6/8"	6-7/8"	3/4"
	Drawer Box	7"	3-1/4"	16-5/8"
VSD48	Cabinet Dimension	48"	34-1/2"	21"
	Door Dimension	23-5/8"	21-7/8"	3/4"
	Long Drawer Front	23-4/8"	6-7/8"	3/4"
	Drawer Front	11-6/8"	6-7/8"	3/4"
	Drawer Box	8-1/4"	3-1/4"	18"

TRIM & DETAILS

Base Fillers



Model	Description	Width	Height	Thickness
BF3	Detail Dimension	3"	34-1/2"	3/4"

Wall Fillers



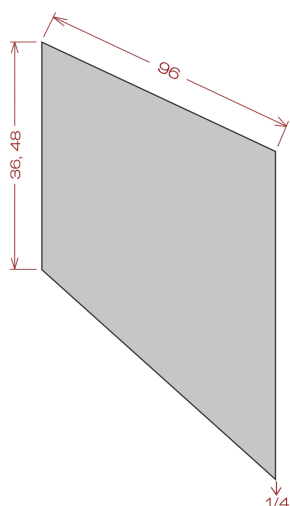
Model	Description	Width	Height	Thickness
WF330	Detail Dimension	3"	30"	3/4"
WF342	Detail Dimension	3"	42"	3/4"
WF396	Detail Dimension	3"	96"	3/4"
WF642	Detail Dimension	6"	42"	3/4"
WF696	Detail Dimension	6"	96"	3/4"

Toe Kick



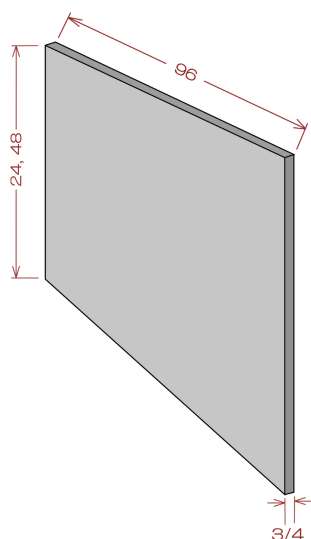
Model	Description	Width	Height	Thickness
TK8	Detail Dimension	3"	96"	1/4"

Base Panel Skins



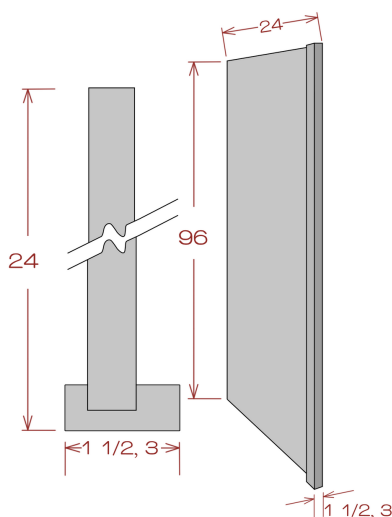
Model	Description	Width	Height	Thickness
BP3696	Detail Dimension	36"	96"	1/4"
BP4896	Detail Dimension	48"	96"	1/4"

Base Finish Panel



Model	Description	Width	Height	Thickness
PNL2496	Detail Dimension	24"	96"	3/4"
PNL4896	Detail Dimension	48"	96"	3/4"

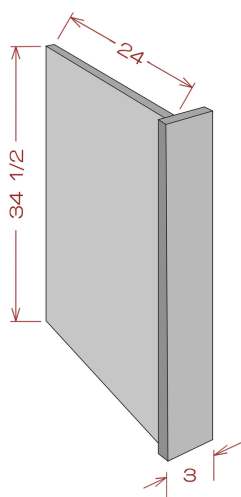
Refrigerator Panel



Model	Description	Width	Height	Thickness
RRP96-1 1/2	Panel	24"	96"	3/4"
	Filler	1-1/2"	96"	24"

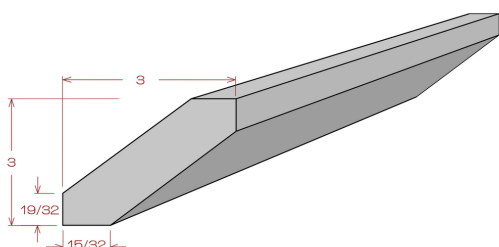
RRP96-3	Panel	24"	96"	3/4"
	Filler	3"	96"	3/4"

Dishwasher Panel



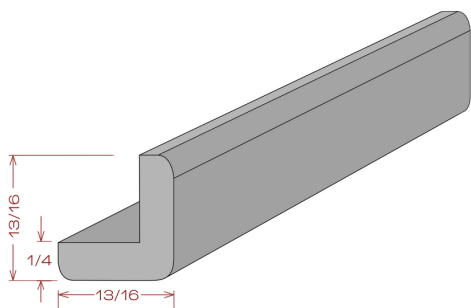
Model	Description	Width	Height	Thickness
DWR3	Panel	24"	34-1/2"	3/4"
	Filler	3"	34-1/2"	3/4"

Angle Crown Molding



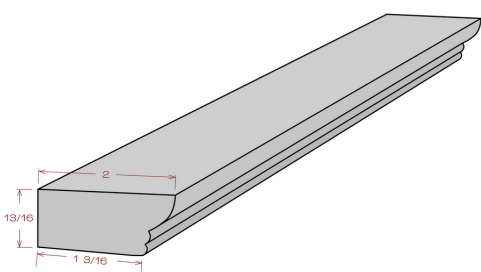
Model	Description	Width	Length	Thickness
ACM8	Detail Dimension	3"	96"	3/4"

Outside Corner Molding



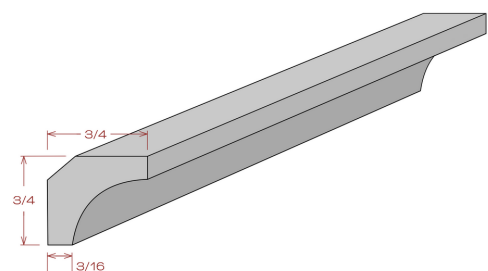
Model	Description	Width	Length	Thickness
OCM8	Detail Dimension	13/16"	96"	-

Ogee Molding



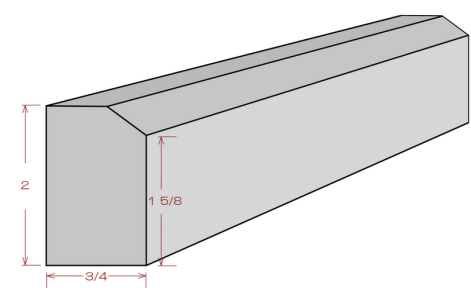
Model	Description	Width	Length	Thickness
OGM8	Detail Dimension	2"	96"	13/16"

Inside Corner Molding



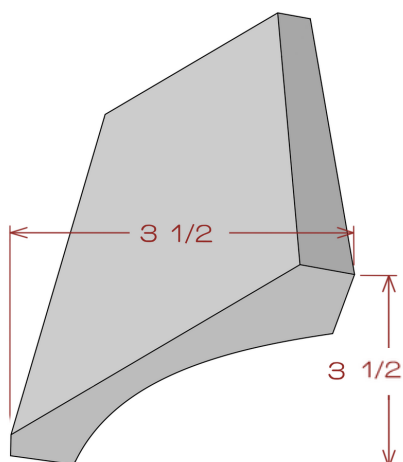
Model	Description	Width	Length	Thickness
ICM8	Detail Dimension	3/4"	96"	-

Countertop Edge Molding



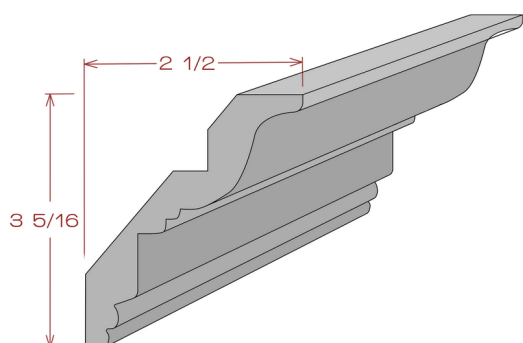
Model	Description	Width	Length	Thickness
CTM8	Detail Dimension	2"	96"	3/4"

Cove Molding



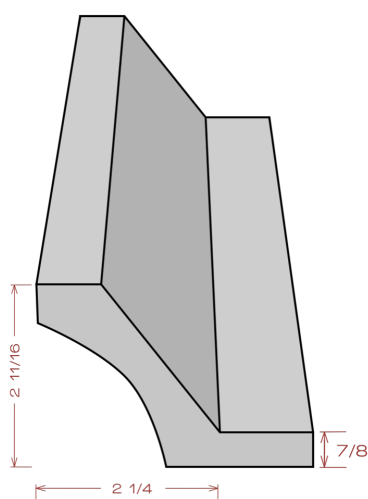
Model	Description	Width	Length	Thickness
COV8	Detail Dimension	3-1/2"	96"	-

Classic Crown Molding



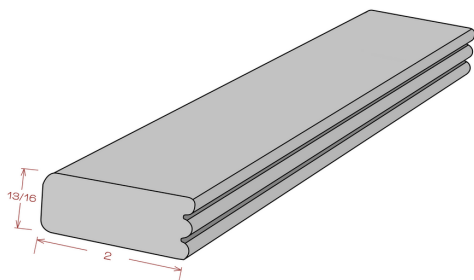
Model	Description	Width	Length	Thickness
CCM8	Detail Dimension	3-5/16"	96"	-

Cove Crown Molding



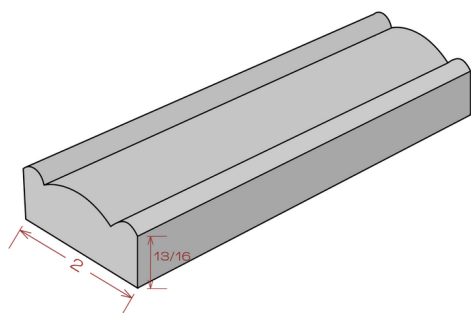
Model	Description	Width	Length	Thickness
AST8 3 1/4	Detail Dimension	2-1/4"	96"	-

Triple Bead Molding



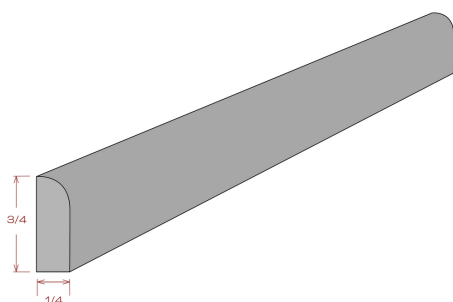
Model	Description	Width	Length	Thickness
TBM8	Detail Dimension	2"	96"	3/4"

Light Rail Molding



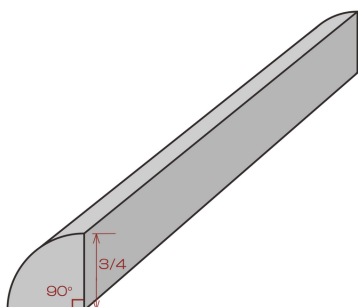
Model	Description	Width	Length	Thickness
TLR8	Detail Dimension	2"	96"	3/4"

Scribe Molding



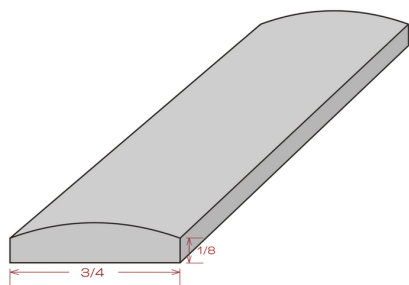
Model	Description	Width	Length	Thickness
SM8	Detail Dimension	3/4"	96"	1/4"

Quarter Round



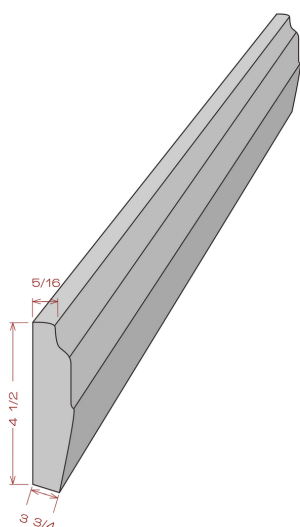
Model	Description	Width	Length	Thickness
QR8	Detail Dimension	3/4"	96"	-

Double Side Finish Scribe Molding



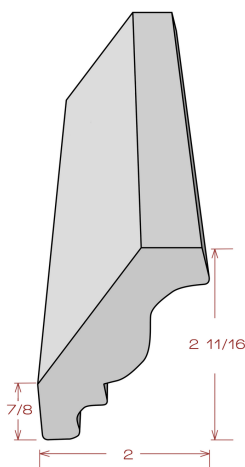
Model	Description	Width	Length	Thickness
BAM8	Detail Dimension	3/4"	96"	-

Base Furniture Molding



Model	Description	Width	Length	Thickness
BM8-4 1/2	Detail Dimension	4-1/2"	96"	-

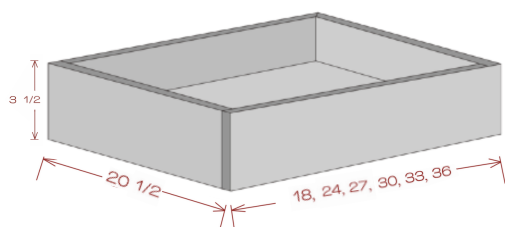
Small Crown Molding



Model	Description	Width	Length	Thickness
SC	Detail Dimension	2"	96"	-

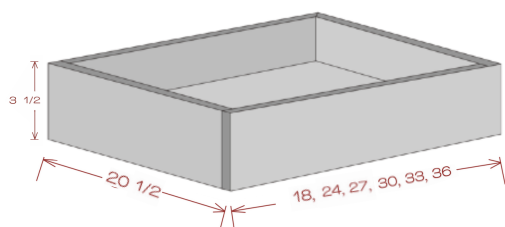
ACCESSORIES

Soft Close Interior Roll-out Drawer



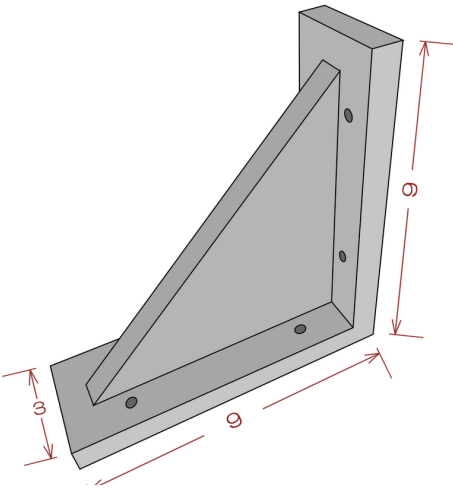
Model	Description	Width	Height	Depth
ROT18-S	Accessory Dimension	16"	3-1/2"	20-1/2"
ROT24-S	Accessory Dimension	22"	3-1/2"	20-1/2"
ROT27-S	Accessory Dimension	25"	3-1/2"	20-1/2"
ROT30-S	Accessory Dimension	28"	3-1/2"	20-1/2"
ROT33-S	Accessory Dimension	31"	3-1/2"	20-1/2"
ROT36-S	Accessory Dimension	34"	3-1/2"	20-1/2"

Soft Close Interior Roll-out Drawer

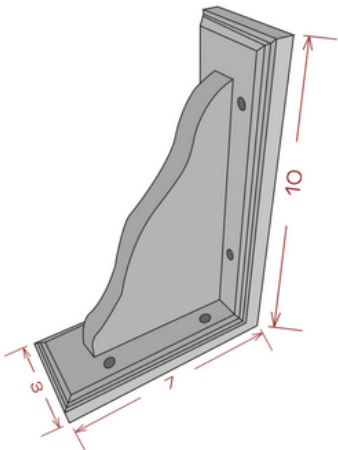


Model	Description	Width	Height	Depth
ROT18-SS	Accessory Dimension	16"	3-1/2"	20-1/2"
ROT24-SS	Accessory Dimension	22"	3-1/2"	20-1/2"
ROT27-SS	Accessory Dimension	25"	3-1/2"	20-1/2"
ROT30-SS	Accessory Dimension	28"	3-1/2"	20-1/2"
ROT33-SS	Accessory Dimension	31"	3-1/2"	20-1/2"
ROT36-SS	Accessory Dimension	34"	3-1/2"	20-1/2"

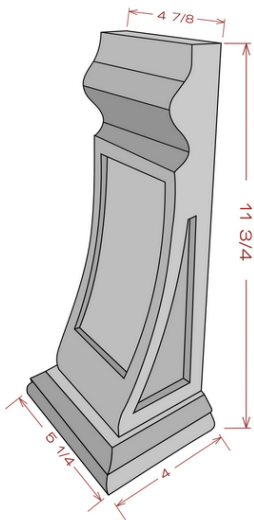
Corbel



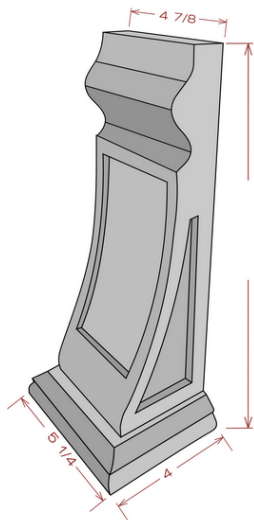
Model	Description	Width	Height	Depth
CBL9*9*3	Accessory Dimension	3"	9"	9"



Model	Description	Width	Height	Depth
CBL	Accessory Dimension	3"	10"	7"

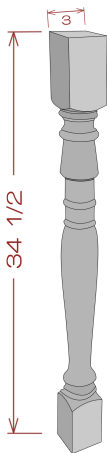


Model	Description	Width	Height	Depth
CBL-M	Accessory Dimension	5"	14-1/4"	8"

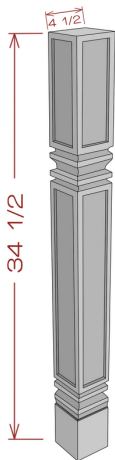


Model	Description	Width	Height	Depth
CBL-L	Accessory Dimension	14"	5-3/4"	6-1/4"

Spool

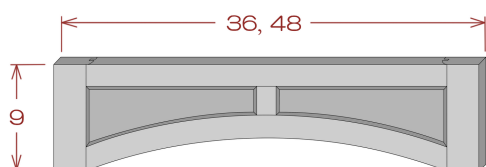


Model	Description	Width	Height	Depth
SP3	Accessory Dimension	3"	34-1/2"	3"



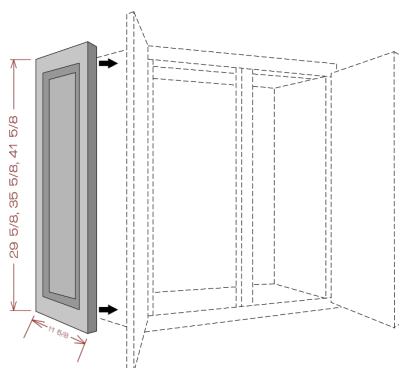
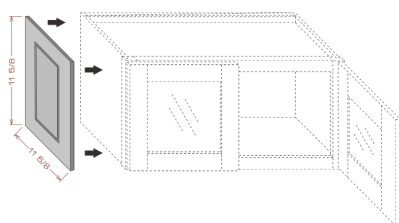
Model	Description	Width	Height	Depth
SP-M	Accessory Dimension	4-1/2"	34-1/2"	4-1/2"

Range Hood Valance



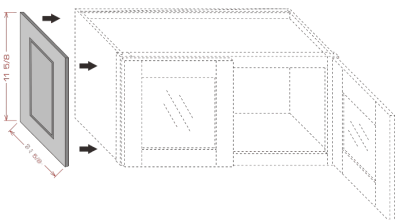
Model	Description	Width	Height	Thickness
RPV36	Accessory Dimension	36"	9"	3/4"
RPV48	Accessory Dimension	48"	9"	3/4"

Wall Decorative Door



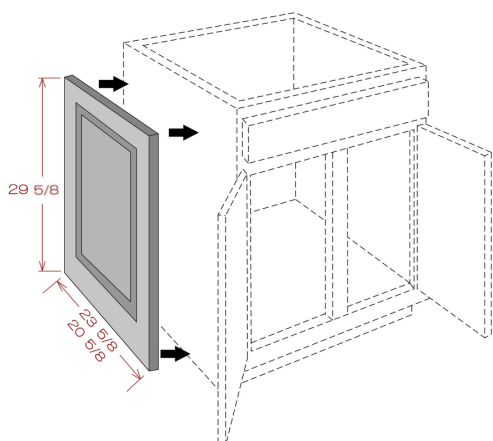
Model	Description	Width	Height	Thickness
WDD1212	Accessory Dimension	11-3/4"	11-3/4"	3/4"
WDD1230	Accessory Dimension	11-3/4"	29 5/8"	3/4"
WDD1236	Accessory Dimension	11-3/4"	35 5/8"	3/4"
WDD1242	Accessory Dimension	11-3/4"	41 5/8"	3/4"

Wall Decorative Door



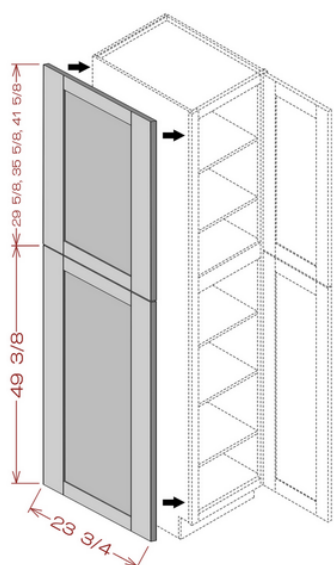
Model	Description	Width	Height	Thickness
WDD2412	Accessory Dimension	24"	11-3/4"	3/4"
WDD2418	Accessory Dimension	24"	17-3/4"	3/4"

Base Decorative Door



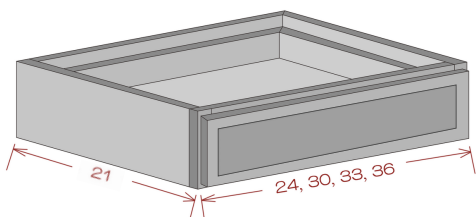
Model	Description	Width	Height	Thickness
BDD21	Accessory Dimension	20-3/4"	29-5/8"	3/4"
BDD24	Accessory Dimension	23-3/4"	29-5/8"	3/4"

Decorative Door Doors For Wall Pantry



Model	Description	Width	Height	Thickness
TDEP2484	Upper Door	23-3/4"	29-5/8"	3/4"
	Lower Door	23-3/4"	49-5/8"	3/4"
TDEP2490	Upper Door	23-3/4"	35-5/8"	3/4"
	Lower Door	23-3/4"	49-5/8"	3/4"
TDEP2496	Upper Door	23-3/4"	41-5/8"	3/4"
	Lower Door	23-3/4"	49-5/8"	3/4"

Front Drawer



Model	Description	Width	Height	Depth
FD24	Accessory Dimension	23-5/8"	7-1/4"	21"
FD30	Accessory Dimension	29-5/8"	7-1/4"	21"
FD33	Accessory Dimension	32-5/8"	7-1/4"	21"
FD36	Accessory Dimension	35-5/8"	7-1/4"	21"

* - Not trimmable

Spray Can



Model	Description	Width	Height	Depth
Spray Can	(Pigeon White and Pebble Gray Only)	-	-	-

White Primer



Model	Description	Width	Height	Depth
White Primer	White primer spray can	-	-	-

Touch Up Kit



Model	Description	Width	Height	Depth
TUK	Includes 1 paint pen and 1 crayon	-	-	-

Touch Up Paste



Model	Description	Width	Height	Depth
TUP*	Includes 1 paste tube	-	-	-

* - TPW, TPG, TSB, HS

WT. 0.7 oz / 20 ml

*Muses*CABINETS

From Coast to Coast